



2016

Gifts

basspro.com



**FREE
SHIPPING
EVERY DAY**

See page 3 for details.

World's leading supplier of premium outdoor gear!

Great gifts for everyone on your list!



Natural
REFLECTIONS

NEW Natural Reflections®
Space Dye Cardigan
See page 7.
\$39.99 86-2307763



2

©Copyright 2016 Bass Pro Shops® Springfield, MO 65898

3 WAYS TO SHOP



1. Shop online
24/7 at
basspro.com



2. By phone
1-800-BASS PRO
(1-800-227-7776)



3. Visit a store
near you. See
basspro.com/stores

Widest Selection • Highest Quality
Very Best Value • Unmatched Service



TITANIUM 8

Johnny Morris®
Titanium 8 Baitcast Reel
See page 68.
\$139.99 86-2261175



NEW RedHead® Explorer Fleece Jacket
See page 53.
\$59.99 86-2296222



NEW RedHead® Men's
Fast Tracker Scentinel
8" Hunting Boots
See page 49.
\$129.99 86-2292468



NEW Bass Pro Shops®
Scout Live-Feed Drone
See page 26.
\$99.99 86-2336585

FREE SHIPPING EVERY DAY!

FREE SHIP TO HOME
ON ORDERS OVER \$75.



FREE SHIP TO STORE ON ALL ORDERS.

SPECIAL OFFER - RECEIVE A \$10 PROMO GIFT CARD
ON ORDERS \$75 OR MORE SHIPPED TO STORE.*

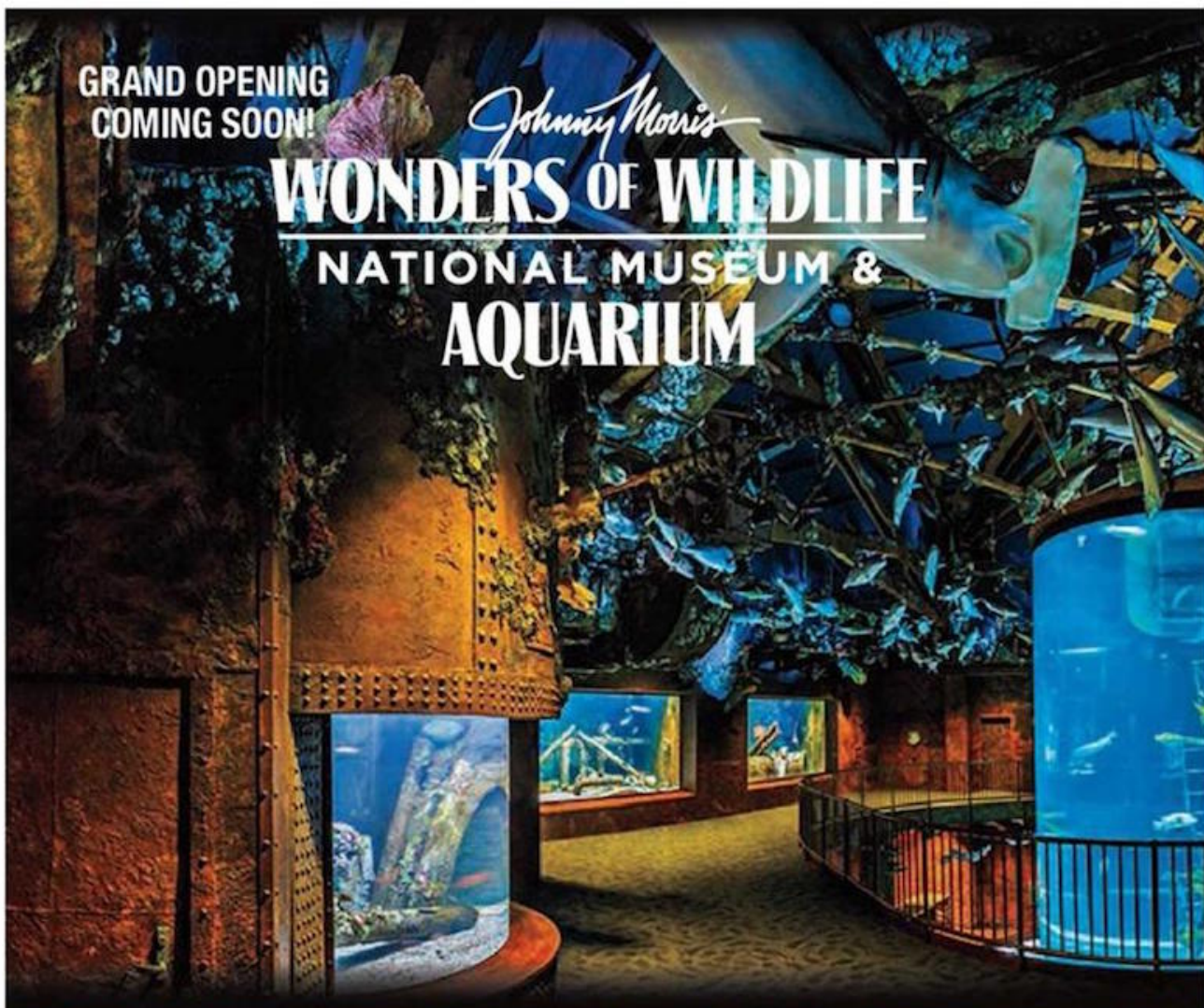
FREE SHIP TO HOME: FREE shipping on orders of \$75 or more applies to economy shipping only to US and Canadian addresses on all internet or phone merchandise orders. (Canadian orders will be charged a \$3.50 brokerage fee, as well as duty and tax.) Excludes gift cards, orders shipped outside of the US and Canada, expedited or additional shipping, and special hazardous fees. Shipping charges on previous orders will not be reimbursed. You may also order by calling 1-800-BASS-PRO. Give the phone representative key code LSKM. **FREE SHIP TO STORE:** no minimum purchase. Buy online at basspro.com and have your items sent to one of our stores for pick-up. ***FREE SHIP TO STORE SPECIAL OFFER:** with orders of \$75 or more shipped to store, receive a \$10 promo gift card at the time of pick-up. Special offer valid through December 31, 2016. Go to basspro.com/stores to find your nearest store. Some restrictions apply. See basspro.com/shipstore for details.



3

GRAND OPENING
COMING SOON!

Johnny Morris
WONDERS OF WILDLIFE
NATIONAL MUSEUM &
AQUARIUM

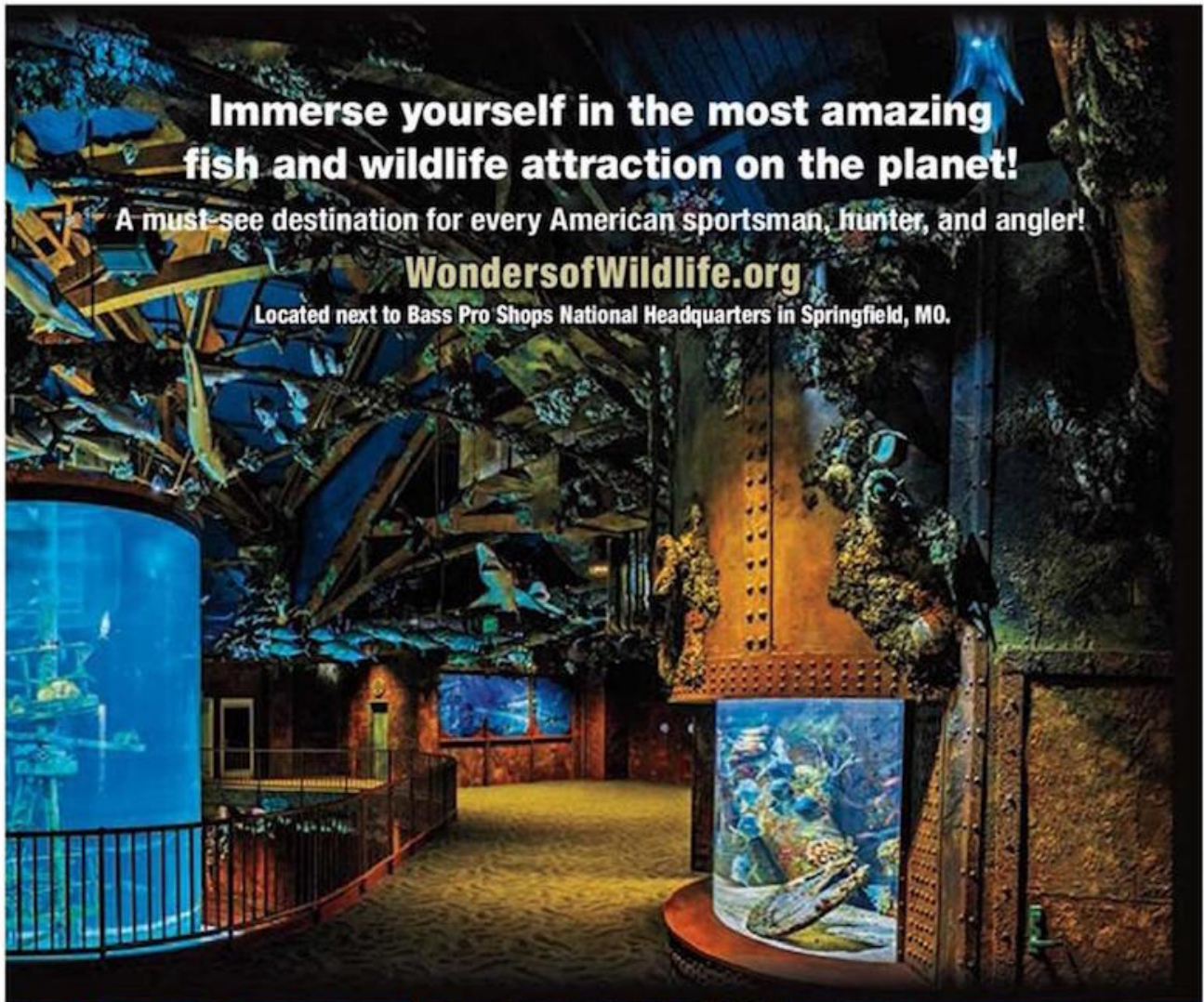


**Immerse yourself in the most amazing
fish and wildlife attraction on the planet!**

A must-see destination for every American sportsman, hunter, and angler!

WondersofWildlife.org

Located next to Bass Pro Shops National Headquarters in Springfield, MO.





Thermal Henley
Starting at
\$24⁹⁹

MADE WITH 60% COTTON
40% POLYESTER
S/S
THERMAL
HENLEY



A
Cabernet
B
Gray

A
Mulled
Grape
Heather
Gray
Cabernet
Harbor
Blue
Anthracite
Picante
Pristine
Lilac
Camo

A. Natural Reflections® Thermal Henley
This lightweight waffle henley is accented with rib trim, a 7-button placket, and contrasting neck tape. 60% cotton/40% polyester. Machine wash. Imported. Sizes: S–XL, 1X–3X.
Solid Colors Camo Print
\$24.99 86-2197340 \$29.99 86-2197340
1X–3X \$27.99 1X–3X \$32.99

B. NEW Quagga® Plaid Fringe Poncho
Showcasing an asymmetrical hem and knotted fringe trim. 100% acrylic. Dry clean only. Imported. One size fits most.
\$29.99 86-2316532

Natural REFLECTIONS

C. Natural Reflections® Flannel Shirt

Finished with 2 button-flap chest pockets, this flannel shirt features princess seams for a flattering fit. Superior-quality 100% cotton is brushed for remarkable softness. Machine wash. Imported.
 Sizes: S-XL, 1X-3X.
 \$24.99 86-2296097
 1X-3X \$27.99

D. NEW Natural Reflections® Space Dye Cardigan

This cozy cardigan showcases a colorful space dye design, open-front styling, and a longer length. 80% cotton/20% acrylic. Machine wash. Imported. Sizes: S-XXL.
 \$39.99 86-2307763



Our bestselling flannel shirt.

Starting at
\$24⁹⁹



C
 Red/Black
 Buffalo

 D
 Gray

Styled with Moose Graphic Waffle Tee
 \$34.99 86-22317021



NEW

D

Gray

Purple

Blue

Red



NEW

A
Cabernet
B
Multi

Natural
REFLECTIONS

A. **NEW** Natural Reflections®
Ladies' Popcorn Knit Sweater
It doesn't get much cozier than this
open-knit sweater. It features rib trim,
raglan sleeves, and a popcorn knit stitch.
100% cotton. Machine wash. Imported.
Sizes: S-XXL.
\$34.99 86-2308443

B. **NEW** Quagga®
Ladies' Dakota Wrap Scarf
Accented with fringe, and featuring a
medium weight for just the right amount
of warmth. 100% acrylic. Imported. One
size fits most.
\$26.99 86-2316332



A
Cabernet

Forest Night Stripe

Pristine

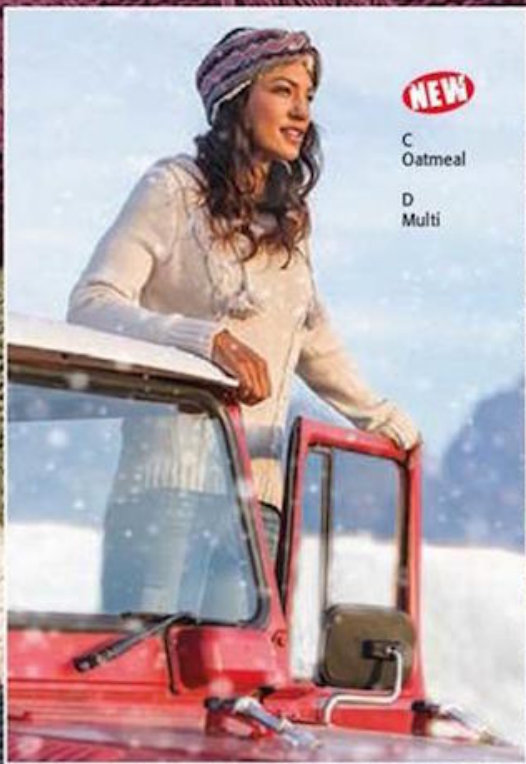
Dress Blue Stripe

Picante

C. NEW Natural Reflections®
Ladies' Cable Knit Hoodie
The perfect cool weather
layer, with cable knit detailing,
tasseled ties, and rib trim. 60%
cotton/40% acrylic. Machine
wash. Imported. Sizes: S-XXL.
\$39.99 86-2307622

D. NEW Quagga®
Ladies' Fair Isle Headband
Lined in ultra-soft sherpa. Shell:
100% acrylic. Lining: 100%
polyester. Imported. One size
fits most.
\$19.99 86-2316474

C
Cabernet



NEW

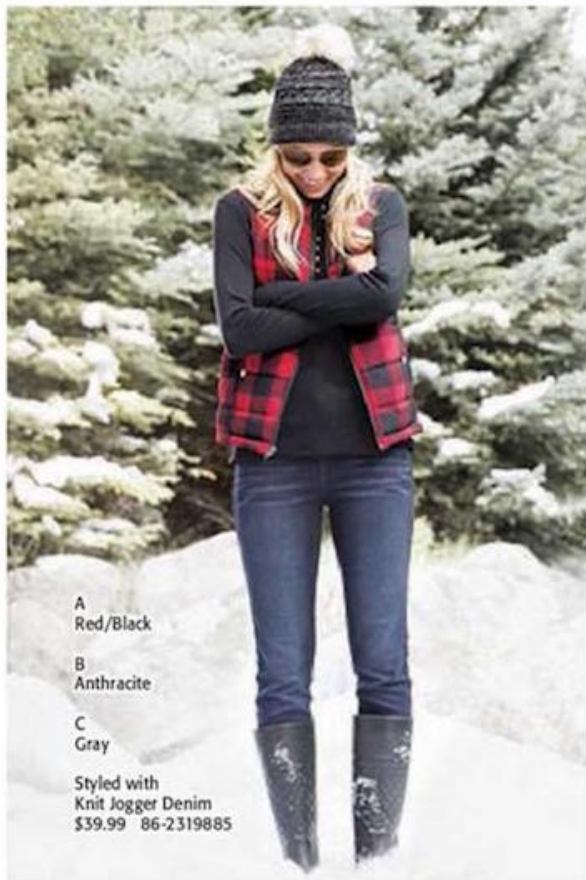
C
Oatmeal

D
Multi

Forest Night

Oatmeal

Dress Blue



Layer up for cold-
weather comfort.



Natural REFLECTIONS

A. **NEW** Natural Reflections®

Ladies' Quilted Vest

Stay warm in a quilted vest featuring a zip front, snap hand pockets, and a jersey lining. 100% polyester. Machine wash. Imported. Sizes: S-XXL.

\$34.99 86-2303924

B. Natural Reflections®

Ladies' 10-Button Mock

Cozy up to fall in our classic mock-neck henley. 60% cotton/40% polyester. Machine wash. Imported. Sizes: S-XL, 1X-3X.

\$19.99 86-2198176
\$22.99 1X-3X

C. **NEW** Natural Reflections®

Ladies' Beanie

This winter hat features a faux-fur pom-pom, a rib band, and fleece lining. Shell: 100% acrylic. Lining: 100% polyester. Imported. One size fits most.

\$14.99 86-2308557

D. Natural Reflections®

Ladies' Chenille Sweater

Raglan sleeves, a faux-suede zipper pull, and a split kangaroo pocket, in soft 72% polyester/28% nylon. Machine wash. Imported. Sizes: S-XXL.

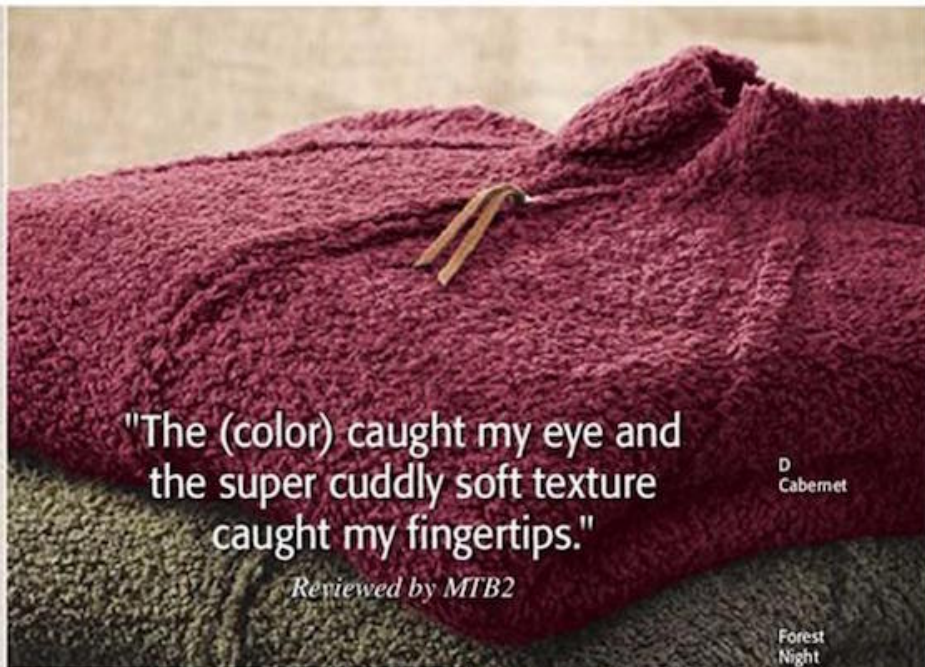
\$39.99 86-2310136

E. **NEW** Quagga® Ladies'

Licorice Fringe Infinity Scarf

Complete your look with this cozy infinity scarf, showcasing a variegated crisscross knit design. 100% acrylic. One size fits most.

\$29.99 86-2316467



"The (color) caught my eye and the super cuddly soft texture caught my fingertips."

Reviewed by MTB2

D
Cabernet

Forest
Night



D
Cabernet

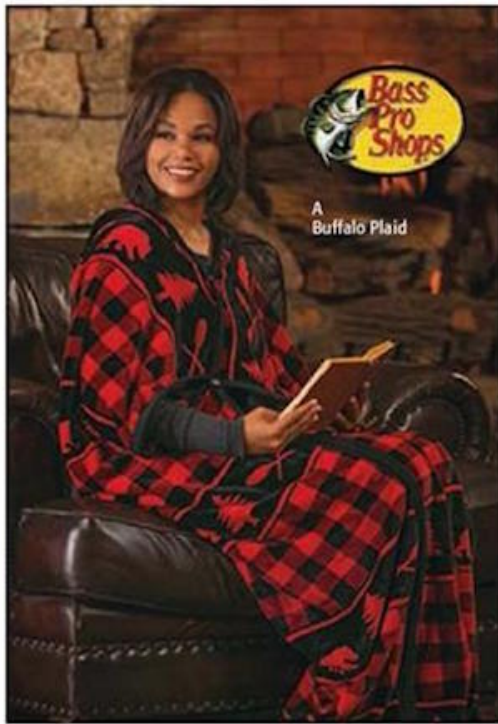
E
Charcoal

NEW

Moroccan
Blue

Antique
White

Anthracite



A
Buffalo Plaid



TrueTimber Conceal SP Fuchsia



TrueTimber Conceal Pink



Bad Attitude



Wolves

A. Bass Pro Shops 2-in-1 Fleece Wraps

These plush wraps can be used as throws or worn as wraps, using the adjustable snaps and zippers. HD artwork. 100% polyester fleece. Machine wash. Imported. One size fits most. 55"x67".

Buffalo Plaid	Black/Red	86-2315054
TrueTimber	Conceal SP Fuchsia	86-2315053
TrueTimber	Conceal Pink	86-2315052
Bad Attitude	Deer	86-2315051
Wolves	Blue	86-2118075

\$24⁹⁷ Reg. 34.99



TrueTimber Conceal SP Fuchsia

Buckheart Plaid

Blue Plaid

Snow

B. Bass Pro Shops Bath Wraps

Wrap up your morning with a functional bath wrap featuring adjustable, removable straps and a hook 'n' loop closure. 100% polyester fleece. Machine wash. Imported. One size fits most. 29"x59".

\$24⁹⁷ Reg. 29.99

TrueTimber*	Conceal SP Fuchsia	86-2315060
Buckheart Plaid	Pink/Grey	86-2315304
Blue Plaid	Blue/Black	86-2315305
Realtree AP*	Snow	86-2315061
Bear Check	Red/Black	86-2315306



B
Bear
Check

\$10 OFF
all Flannel Sheet Sets.

C. Bass Pro Shops Flannel Sheet Sets

Cozy up with flannel sheets in your favorite outdoor pattern. Flannel Sheet Sets include a fitted sheet, a flat sheet, and 2 pillowcases (twin includes 1). 100% cotton. Machine wash. Imported.

Sierra Plaid 86-2019709*
Bass Country 86-2019687
King of Bucks 86-1812379
TrueTimber*HTC Fall 86-1428286

*Not available in King

Twin	Full	Queen	King
\$29⁹⁷	\$34⁹⁷	\$39⁹⁷	\$49⁹⁷
Reg. 39.99	Reg. 44.99	Reg. 49.99	Reg. 59.99



Bass Country



King of Bucks



TrueTimber HTC Fall



D
Lake Lodge



Woodland Forest

D. Bass Pro Shops Microfiber Sheet Set 2-Pack

This 2-pack includes 2 complete sheet sets: 1 patterned set and 1 solid set in a coordinating tone. Each set is made of 100% polyester microfiber, and includes 1 flat sheet, 1 fitted sheet, and 2 pillowcases (twin has 1 pillowcase). Machine wash. Imported.

Lake Lodge 86-2221274
Woodland Forest 86-2221200

Packs include 2 complete sheet sets: 1 patterned and 1 solid. Available in Twin, Full, Queen, and King.

Twin	Full	Queen	King
\$29⁹⁷	\$34⁹⁷	\$39⁹⁷	\$49⁹⁷
Reg. 39.99	Reg. 44.99	Reg. 49.99	Reg. 59.99

A

Brindled Border

Fishing

Sandalwood

Buffalo Plaid

Coal Cloud

NEW

A Brindled Border

Bob Timberlake

Supreme quality & lightweight comfort.

Only **\$29⁹⁹**



A. NEW Bob Timberlake®

Blanket Throws

Featuring a detailed design, these lightweight, fringed throw blankets make a great addition to your couch, or as a wrap on a chilly day. 100% acrylic. Machine wash. Imported. 53"x70".

\$29⁹⁹ 86-2309716

B. NEW Bob Timberlake®

Sherpa Throws

These timeless, heavyweight throws feature a wilderness pattern on the front with cozy, coordinating sherpa on the back. 100% polyester. Machine wash. Imported. 50"x70".

\$49⁹⁹ 86-2016170





C. Bob Timberlake® Blowing Rock Bedding Collection

Let your dreams be laced with bucks, bears, and canoes with the Blowing Rock bed set. It features a chenille stripe comforter, 2 shams, a neckroll pillow, and a bed skirt. Shams showcase a top-stitched flange and 3 wooden buttons. Drapes and valance are unlined. 100% polyester. Dry clean. Pillows: Spot clean. Imported.

D. Bob Timberlake® Abbott's Creek Bedding Collection

Escape into the wilderness with a bed set featuring a green plaid comforter, 2 faux leather shams, a tan plaid neckroll pillow, and a gathered faux leather bed skirt. Euro Sham has a faux leather welt; Welcome to the Lake Pillow features appliqué and fringe. Green plaid Drapes are unlined and include 2 panels and tie-backs. Plaid fabric is 47% polyester/28% wool/20% acrylic/5% other. Solids are 100% polyester microfiber suede. Dry clean only. Imported.



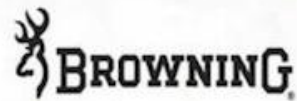
		Blowing Rock	Abbott's Creek	
Comforter Set	Queen	86-2227842	86-2227898	199.99
Comforter Set	King	86-2227843	86-2227899	239.99
Euro Sham	27"x27"	86-2227844	86-2227900	29.99
Fine Tree Pillow	14"x26"	86-2071499	-	29.99
Welcome to the Lake Pillow	16"x24"	-	86-2227806	29.99
Drapes (2 Panels)	54"x84"	86-2227850	86-2227933	89.99
Valance	54"x18"	86-2227851	86-2227934	29.99





Browning
Country

Lodge Bed Sets starting at \$89.99



Browning Country Bedding

Warm, woody plaid accented with Buckmarks and faux stitching gives the Country comforter a handmade-quilt look. Shams feature a plaid Buckmark, while the tan sheets have a Buckmark pattern. Drapes and valance are lined. **Comforter Set** includes a comforter, a bedskirt, and 2 shams (twin includes 1 sham). **Sheet Set** includes a fitted sheet, a flat sheet, and 2 pillowcases (twin includes 1 pillowcase). 60% cotton/40% polyester. Machine wash. Spot clean pillows. Imported.

Comforter Set	Twin	86-2238024	89.99
Comforter Set	Full	86-2238025	109.99
Comforter Set	Queen	86-2238026*	119.99
Comforter Set	King	86-2238027*	139.99
Sheet Set	Twin	86-2238004	49.99
Sheet Set	Full	86-2238005	59.99
Sheet Set	Queen	86-2238006	69.99
Sheet Set	King	86-2238007	79.99
Plaid Pillow	18"x18"	86-2238036	24.99
Camo Pillow	20"x20"	86-2238037	24.99
Oblong Pillow	14"x20"	86-2238038	24.99
2 Rod Pocket Drapes	42"x87"	86-2238028	49.99
Valance	63"x20"	86-2238029*	24.99
Shower Curtain (Unlined)	72"x72"	86-2238039*	24.99

*Not shown



Ducks
Unlimited
Plaid



Ducks Unlimited Plaid Bedding

Retreat to a wilderness escape and show your support for wetlands conservation with Ducks Unlimited bedding. The plaid 2-panel drapes and valance are lined for privacy and warmth. **Comforter Set** includes a comforter, a bedskirt, and 2 shams (twin includes 1 sham). **Sheet Set** includes a fitted sheet, a flat sheet, and 2 pillowcases (twin includes 1 pillowcase). 60% cotton/40% polyester. Machine wash. Spot clean pillows. Imported.

Comforter Set	Twin	86-2215541	89.99
Comforter Set	Full	86-2215542	109.99
Comforter Set	Queen	86-2215543	119.99
Comforter Set	King	86-2215544	139.99
Sheet Set	Twin	86-2215520	49.99
Sheet Set	Full	86-2215521	59.99
Sheet Set	Queen	86-2215522	69.99
Sheet Set	King	86-2215523	79.99
Square Pillow (Tan)	20"x20"	86-2215560	24.99
Square Pillow (Brown)	20"x20"	86-2215561	24.99
Oblong Pillow	14"x20"	86-2215562	24.99
2 Rod Pocket Drapes	42"x87"	86-2215557	49.99
Valance	63"x20"	86-2215558*	24.99
Shower Curtain (Unlined)	72"x72"	86-2215562*	24.99

*Not shown

Reminisce about
the hunt all year.

Browning Embroidered Microsuede Bedding

Treat yourself to the luxuriously soft microsuede of this Browning bed set. **Comforter Set** includes a comforter, a bedskirt, and 2 shams (twin includes 1 sham). Embroidered Buckmarks accent all sides of the rich chocolate brown comforter; Buckmarks are also featured at the bottom of drapes. Dry clean only. Spot clean pillows. Imported.

			Orig.	Sale
Comforter Set	Twin	86-2048104	169.99	99.97
Comforter Set	Full	86-2048105	199.99	129.97
Comforter Set	Queen	86-2048106*	209.99	139.97
Comforter Set	King	86-2048107*	229.99	159.97
Square Pillow (Brown)	18"x18"	86-2048118	29.99	19.97
Square Pillow (Tan)	18"x18"	86-2048119	29.99	19.97
Logo Pillow (Brown)	20"x20"	86-2048120	29.99	19.97
Logo Pillow (Tan)	20"x20"	86-2048121	29.99	19.97
Oblong Pillow (Brown)	14"x20"	86-2048123	29.99	19.97
2 Rod Pocket Drapes	42"x87"	86-2048138*	99.99	59.97
Valance	63"x20"	86-2048139*	39.99	24.97
Shower Curtain (Unlined)	72"x72"	86-2048141*	49.99	29.97

*Not shown

While supplies last.

Mossy Oak® Break-Up Country® Bedding

MOBU Country brings an outdoor realism and richness of depth to your bedroom. **Comforter Set** includes a comforter, a bedskirt with a 15" drop, and 2 shams (twin includes 1 sham). 140-thread-count comforter is made of easy-care 100% cotton. **Sheet Set** includes a fitted sheet, a flat sheet, and 2 pillowcases (twin includes 1 pillowcase). Sheets are a 220-thread count, 100% cotton. Machine wash. Imported.

			Orig.	Sale
Comforter Set	Twin	86-2225787*	99.99	69.99
Comforter Set	Full	86-2225788*	149.99	109.99
Comforter Set	Queen	86-2225789*	169.99	129.99
Comforter Set	King	86-2225790*	199.99	149.99
Sheet Set	Twin	86-2225794	49.99	39.99
Sheet Set	Full	86-2225795	59.99	44.99
Sheet Set	Queen	86-2225796	69.99	49.99
Sheet Set	King	86-2225797	79.99	59.99
Valance	84"x15"	86-2225799*	29.99	24.99
2 Rod Pocket Drapes	42"x84"	86-2225798	59.99	44.99
Shower Curtain (Unlined)	72"x72"	86-2225801*	29.99	19.99

*Not shown

NOTICE: Some items require an additional shipping charge due to size, weight, or quantity ordered. Ground delivery may not be available in some areas. Call for availability and for shipping rates outside U.S., and for AK, HI, or Puerto Rico.

*Additional \$8 shipping charge per item.

CLOSEOUT! 

Save 33-40%

OFF orig. price



All-cotton comforter sets
Starting at \$69.99

**BREAK-UP
COUNTRY**

17



Bed sets
starting at \$49⁹⁹



NEW King of Bucks or TrueTimber Kanati Bedding

Transport yourself to a wooded retreat with a bedding set from King of Bucks or TrueTimber Kanati. The King of Bucks bedding set showcases a rich brown color scheme with magnificent bucks, while TrueTimber Kanati boasts vivid, realistic TrueTimber camo. Each Comforter and Sham Set includes a comforter and 2 shams (twin includes 1 sham). Each Sheet Set includes a flat sheet, a fitted sheet, and 2 pillowcases (twin includes 1 pillowcase). Valance and 2-panel Drapes are lined for privacy and warmth. 100% polyester. Machine wash. Imported.

		King of Bucks	TrueTimber Kanati	Price
Comforter Set	Twin	86-2328684	86-2329126	49.99
Comforter Set	Full	86-2328685	86-2329127	59.99
Comforter Set	Queen	86-2328686	86-2329128	69.99
Comforter Set	King	86-2328687	86-2329129	79.99
Sheet Set	Twin	86-2328669	86-2329121	29.99
Sheet Set	Full	86-2328670	86-2329122	34.99
Sheet Set	Queen	86-2328671	86-2329123	39.99
Sheet Set	King	86-2328672	86-2329124	49.99
Pillow	20"x20"	86-2328706	-	14.99
Pillow	14"x20"	86-2328707	-	14.99
Drapes	42"x87"	86-2328690	86-2329240	29.99
Valance	63"x21"	86-2328691	-	14.99
Valance	88"x18"	-	86-2329241	14.99



7-Piece Bed Sets starting at \$79⁹⁹

Bass Pro Shops Bass Country Bedding

Earth tones and outdoor imagery give these sets a rustic feel that makes them ideal as a gift for a young outdoor enthusiast. **Bed Set** includes a comforter, a fitted sheet, a flat sheet, 2 shams, and 2 pillowcases (twin includes 1 of each). 180-thread-count sheets are beautifully matched and crafted in soft, wrinkle-free 60% cotton/40% polyester. Machine wash. Spot clean pillow. Imported.

Bed Set	Twin	86-1828850	79.99
Bed Set	Full	86-1828851	109.99
Bed Set	Queen	86-1828852	129.99
Bed Set	King	86-1828853	149.99
Square Pillow	18"x18"	86-1828855	19.99
2 Rod Pocket Drapes	42"x87"	86-2227964	39.99
Valance	88"x18"	86-1828858	19.99
Shower Curtain (Unlined)	72"x72"	86-1828856*	24.99

*Not shown



Bass Country

Bass Pro Shops Camo Bedding

Each **Bed Set** includes a comforter, a fitted sheet, a flat sheet, 2 shams, and 2 pillowcases (twin includes 1 of each). Choose from ultra-realistic, high definition TrueTimber camo; Realtree MAX-5™—the waterfowler's camo; Mossy Oak Break-Up, the classic camo pattern that transports you to the woods; or Realtree APC™ Pink, a pattern featuring the realistic branches and leaves of Realtree camo reimagined in a brighter color palette outdoor ladies will love! Drapes are lined for privacy and warmth. 60% cotton/40% polyester. Machine wash. Spot clean pillow. Imported.

		True Timber	
Bed Set	Twin	86-2228337	79.99
Bed Set	Full	86-2228339	109.99
Bed Set	Queen	86-2228340	129.99
Bed Set	King	86-2228341	149.99
Square Pillow	18"x18"	86-2228395	19.99
2 Rod Pocket Drapes	42"x87"	86-2228389	39.99
Valance	88"x18"	86-2228390*	19.99
Shower Curtain (Unlined)	72"x72"	86-2228396*	24.99

*Not shown



For more information on how to order Realtree MAX-5, Realtree APC Pink, and Mossy Oak Break-Up, visit basspro.com



True Timber
and
MTC



A. NEW Uplights

These rustic lamps feature a realistic dog or antler base, an antique-finish shade, and an upright that provides soft lighting. Perfect with outdoor-themed décor, these resin lamps are a fitting addition to your office or den. Type B E12 phenolic socket. Imported. 16"H.

\$29.99 86-2332043

B. NEW Mica Shade Table Lamp

Illuminate your space while adding a bit of outdoor charm. This outdoorsy lamp features a mica shade with metal cutouts and a zinc alloy body. Base has an on/off switch, a USB port, and an electrical outlet. 100W max bulb. Imported. 27.5"H.

\$119.99 86-2332040



C. NEW Deer Table Lamp

A linen shade accented with deer and trees sits atop a resin base with a warm walnut finish. Takes a 3-way 150W max bulb. Imported. 29"H.

\$59.99 86-2230375

D. Shotgun Table Lamp

This polyresin lamp features a silver- and wood-look finish with a dark brown hardback shade. 3-way switch. 100W Max bulb. UL*/CUL approved. Imported. 30"H.

\$59.99 86-2127828

E. Antler Table Lamp

Measuring 29.5" tall, this rustic lamp showcases a wood-look base and antlers made of polyresin; the shade is brushed-brown faux leather. Takes a Type A, 3-way, 100W bulb. E27 aluminum socket. Imported.

\$59.99 86-2230374

NOTICE: Some items require an additional shipping charge due to size, weight, or quantity ordered. Ground delivery may not be available in some areas. Call for availability and for shipping rates outside U.S., and for AK, HI, or Puerto Rico. *Additional \$8 shipping charge per item.



A. Bass Pro Shops 5-Piece Table Lamps and Accessories Set

Give any room a rustic touch with our Bass Pro Shops Table Lamp and Accessories Sets. Antler Set includes two 28" lamps with round hardback shades, 2 picture frames (5"x7" and 8"x10"), and a remote control holder with 3 slots. Fishing Set comes with two 29" fishing rod table lamps topped with square hardback shades, 2 candle holders with lures, and an 8"x10" photo frame. Each lamp takes a 3-way, 100W Max Type A bulb. UL*/CUL approved. Resin. Imported.

\$99⁹⁹ 86-2046358*

YOUR CHOICE
\$99⁹⁹



B-D. Lodge-Themed Table Lamps

Brighten any room with outdoor personality. Each lamp features a lifelike cold-cast resin sculpture, a 3-way switch, and a handsome textured shade. UL*/CUL approved components. **Boat Motor Lamp** is 32" high. **Oil Lantern Lamp** is 26.75" high, with a nightlight in base. **Pinecone Lamp** is 30" high. Lamps take a 100W bulb. Imported.

B. Boat Motor Lamp 86-1540899*
C. Oil Lantern Lamp 86-2230375*
D. Pinecone Lamp 86-2229662*

\$89⁹⁹ *Your Choice*

A **B** **C** **D** **E**

EXCLUSIVE **Bass Pro Shops**

GREAT GIFT IDEA!

A-C. Bass Pro Shops Exclusive Insulated Tumblers
 Double-walled insulated tumblers keep cold drinks cold and hot drinks hot, with minimal condensation. Virtually unbreakable. Guaranteed for life. Made in USA.

A. Gun Flag	86-2338216	21.99
B. One Nation Under God	86-2310095	21.99
C. Liberty or Death	86-2276744	21.99

tervis tumbler

D-E. Camp Mugs
 Make a freedom statement at the campfire or at home with these 16 oz. Camp Mugs. Made of stoneware, with an oversized handle for comfortable sipping. Dishwasher and microwave safe. Imported.

D. Don't Tread on Me	86-2324863	5.99
E. We the People	86-2324864	5.99

Show your appreciation for our freedom.

F **G** **I** **J**

H

NEW

F-G. Die Cut Embossed Tin Signs
 Eye-catching additions to your man cave, shop, or living room. Made of tin with pre-drilled holes for hanging. Imported.

F. National Rifle Association*	12" diameter	86-2218649	14.99
G. Don't Tread on Me	12" diameter	86-2281370	14.99

H. NEW Framed Canvas Reflective Art
 Framed wall print of the US flag with the Pledge of Allegiance. Printed on quality white canvas with a special coating for protection from UV rays. 40"x28"x 1".
\$79.99 86-2361327

I-J. Wood Slat Signs
 Solid wood construction with giclée printed design, finished with both a hemp rope and keyhole for displaying. Natural, raw materials give an authentic aged and distressed look. 12"x12". Imported.

I. Don't Tread on Me	86-2346318	19.99
J. Freedom	86-2346319	19.99

22 1-800-227-7776 • BASSPRO.COM

CHAIN OF ROCKS BRIDGE, ST. LOUIS

*Two romantics.
One classic Missouri ride.*

HOP ON FOR ALL THE
TWISTS AND TURNS.

Meet the McClellands from
Little Rock. We gave them a
camera and a road trip along
Route 66 in the Show-Me State.
You won't believe everywhere
they got their kicks.

See more of their show,
and start enjoying yours,
at VisitMO.com.

PAID ADVERTISEMENT

MISSOURI
enjoy the show

23

Sizes and styles for everyone.



A Ladies' Pink Watch

Ladies' Copper Watch

Men's Black Leather Watch

Men's Brown Watch

Men's Fast Strap Watch

Men's Black/Blue Watch

Men's Silver/Black Watch

Rugged, value-priced Outdoor Watches for the active lifestyle.



A. Bass Pro Shops Outdoor Watches

Ruggedly built and economically priced, these Outdoor Watches make a great choice for fishing, hunting, hiking, or casual wear. Watches are both water-resistant and shock-resistant to stand up to your active lifestyle. Luminous green hands are easy to see in low-light conditions. Durable stainless steel case back. Includes handsome gift box. Sizes and styles to fit any wrist and activity—adjustable bands. Perfect gifts for the outdoorsman or outdoorswoman in your life. 86-2327754

YOUR CHOICE
\$14⁹⁷
 Reg. 19.99

Embossed Leather Collection



B Buck



D Bass



E Skull



C Killer Instinct



F BPS

B-J. Bass Pro Shops Leather Wallets and Accessories
 Handcrafted using only the highest-grade leather, and double-stitched to ensure durability. Features include: ID windows, credit card pockets, and money dividers to keep bills and cards organized. Embossed wallets have images to match outdoor lifestyles, and come in a gift tin. Exotic wallets are made of authentic deerskin, moose, or bison leather. Imported. See available [embossing options at basspro.com](http://embossingoptionsatbasspro.com)

Embossed Leather Collection	
B. Trifold	86-1088499
C. Duo-Fold	86-1088500
D. Roper Wallet	86-2244346
E. Checkbook Cover	86-1088501
F. Hipster	86-1089038
Exotic Leather Collection	
G. Billfold	86-1278066
H. Checkbook Cover	86-2286258
L. Checkbook Cover	86-2286214
J. Trifold	86-2286244

Exotic Leather Collection



G Deerskin Brown



H Moose Black



I Bison Tan



J Bison Brick Red

YOUR CHOICE
\$14⁹⁷
 Reg. 19.99

Inspire their imagination with jumbo play sets.



10-pc. set includes realistic details to keep the fun going for hours.



10-pc. set

WARNING: All items on these pages contain small parts. Not for children under 3.

A. Bass Pro Shops® Deluxe Ford® F-250 and NITRO Bass Boat Fishing Adventure Play Set
This splashy set includes a Ford F-250 truck boasting a custom blue finish, a working tow winch, and an opening tailgate; a trailer; and a NITRO boat with a moving engine. Also includes an action figure; a personal watercraft; a fishing pole; 2 bass fish; and a landing net. Imported. Ages 3 and up.

\$39⁹⁹ 86-2220772

B. NEW Bass Pro Shops® Deluxe TrueTimber® Ford® Raptor Hunting Adventure Play Set
Kids will be ready to head into the wild with this 10-pc. set. It includes a licensed 12" Ford Raptor with opening doors, a working trailer hitch, and an opening tailgate; a 3.75" action figure; a 6" ATV with a working dump bed; a trailer; rattle horns; a campfire; a ladder stand; a whitetail deer; a rifle; and binoculars. Imported. Ages 3 and up.

\$39⁹⁹ 86-2314169

C. NEW Bass Pro Shops® Deluxe Jeep® Wrangler Camping Adventure Play Set
Inspire a love of the outdoors. Includes an 11" metallic purple Jeep Wrangler with opening doors; an 8" trailer; a 6" ATV; an action figure; a dog; a pink camo tent; a campfire; a camp stove; a cooler; a kayak; and a paddle. Imported. Ages 3 and up.

\$39⁹⁹ 86-2327127



10-pc. set

YOUR CHOICE \$39⁹⁹



11-pc. set

To shop all play sets, visit basspro.com



NEW



Fully functional racks.

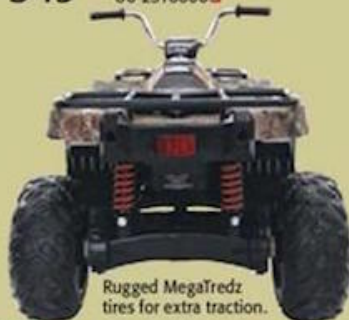
Braking feature when foot is lifted from the pedal.

NEW Bass Pro Shops® Yamaha® 12V ATV Kids will be ready to rock the outdoors in the Bass Pro Shops Yamaha 12V TrueTimber® Kanati Camo Grizzly. This rugged 4-wheeler boasts a TrueTimber Kanati camo finish, fully functional racks, easy-grip handlebars, and MegaTredz tires. Customize their riding experience with 2 speeds (2.5 mph and 5 mph) and a reverse speed of 2.5 mph. Brakes are engaged when foot is lifted off the pedal, ensuring a safe ride. Runs up to 2 hrs. Rechargeable 12V battery included. Imported.

Ages 3+. Max. Wt. Capacity: 130 lbs.

\$349⁹⁹

86-2318060



Rugged MegaTredz tires for extra traction.

NOTICE: Due to size or weight, the item must ship via truck line. Please allow 7-10 business days. Contiguous 48 states only. A street address is required for delivery.



SCOUT
EVARONE

NEW



Cage protects blades during flight and landing.

LIVE FEED



Live stream from your drone to your smartphone for first-person viewing (phone not included).



Built-in gyro for smooth flying.

NEW Bass Pro Shops® Scout Live-Feed WiFi RC Drone

Stream live videos and photos to your smartphone with this RC drone, boasting a durable plastic body, an internal gyro, and 4 channel controls. Download the free Striker FPV app to save, view, and share photos and videos. 2.4GHz transmitter prevents radio interference. 4 AA batteries (not included) and rechargeable Li-ion battery (included). Ages 14+.

\$99⁹⁹

86-2336585



NEW Bass Pro Shops® Ford® F-150 SVT Raptor RC Truck
 Go off-road with this Bass Pro Shops Ford F-150 SVT Raptor RC Monster Truck. This RC truck has a hobby-type body that is lightweight and durable, plus giant rubber tires, a full-function remote control, and TrueTimber® Kanati. Includes a rechargeable battery for truck and a 9V battery for transmitter. Ages 8+.
\$59⁹⁹ 86-2336573

1:10-scale
monster truck!



NEW Mean Machines Jeep® Rock Crawler RC Truck
A Bass Pro Exclusive
 Seriously powerful motors and rock-scaling capabilities make this Jeep Rock Crawler an off-road star. Featuring the body of a 2015 Jeep Wrangler Rubicon Unlimited, insanely grippy tires, and an innovative suspension system, this RC Rock Crawler easily traverses uneven terrain. Requires 6 AA batteries and one 9V battery (not included). Ages 6+.
\$39⁹⁹ 86-2336483

NOTICE: Some items require an additional shipping charge due to size, weight, or quantity ordered. Ground delivery may not be available in some areas. Call for availability and for shipping rates outside U.S., and for AK, HI, or Puerto Rico.
 □Additional \$75 shipping charge per item.



1:15-scale
rock crawler!

NEW



JEEP WRANGLER RUBICON

A. RedHead® Men's
Ultimate Flannel Shirt
100% cotton. Left-chest
pocket. Imported. Sizes:
S-2XL, 3XL-5XL, L/T-2XL/T.
\$24⁹⁹ 86-1597146
3XL-5XL & Talls \$27.99

A
Deep Forest



Ultimate Flannel

Combed yarns resist pilling.
Virtually shrink-free.
Soft and durable.

A
Red/Brown

Khaki
Heather

Black/Red

Ivory

Green/Black

Federal Blue

Gray



B
Navy/Wheat
Styled with
RedHead Pocket
T-Shirt
\$15.99 86-2205305

Bear Creek Flannel

Choose from 12 colors: 6 solids and 6 plaids.

B-C. **NEW** RedHead®
Men's Bear Creek
Flannel Shirt
100% cotton flannel.
Imported. Sizes:
S-2XL, 3XL, L/T-2XL/T.
\$24.99
3XL & Talls \$27.99



B. Plaids 86-1809929
C. Solids 86-2105097



Comfortable men's shirts.

With low prices and high quality, RedHead makes gift giving easy!



Starting at
\$19⁹⁹



A-B. RedHead® Men's Pocket Henley or T-Shirt
 100% cotton jersey. Each style features 8 colors.
Colors: Phantom, Sundried Tomato, Chestnut, Khaki
 Heather, Golden, Navy, Gray Heather, Grape Leaf.
Imported. Sizes: S-2XL, 3XL-5XL.
 A. Henley 86-2205378
 B. T-Shirt 86-2205305

2 for \$25 S-2XL 2 for \$30 3XL-5XL
 Reg. \$15.99 each Reg. \$18.99 each

A-B Colors



C. RedHead® Men's Thermal Henley
 60% cotton/40% polyester waffle. Imported.
Sizes: S-2XL, 3XL-5XL.

\$24.99 86-1812297
 3XL-5XL \$27.99



D-E. NEW RedHead® Men's Three Creeks Crewneck or Henley
 60% cotton/40% polyester. **D Colors:** Henna, Lizard,
 Midnight, Pelican, Mustard. **E Colors:** Putty, Wine,
 Copper, Smoke, Ivy, Bluestone. Imported.
Sizes: S-2XL, 3XL.

D. Crewneck 86-2295086
 E. Henley 86-2295055
 \$19.99 3XL \$22.99

D Colors



E Colors





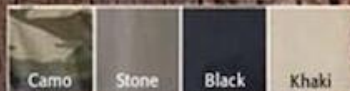
A. NEW RedHead® Men's Stanley Cargo Pants

100% cotton ripstop—the perfect fabric for comfort AND durability. 9 pockets. Stretch waistband. Imported. *Inseam/Even Waist Sizes:* 30" in 32"–48", 32" in 32"–48", 34" in 32"–44", 46" & 48" \$34.99 86-2294711 \$39.99



B. RedHead® Men's Trailhead Twill Cargo Pants

100% cotton reverse twill is double-needle stitched for superior durability. 9 pockets. Imported. *Inseam/Waist Sizes:* 30" in 32"–48", 32" in 32"–48", 34" in 32"–44", 46" & 48" \$39.99 86-1505733 \$44.99



C. NEW RedHead® Men's Canvas Flat Front Pants

100% cotton canvas is softer and more flexible than typical canvas. Enzyme-stonewashed for instant comfort. 4 pockets. Imported. *Inseam/Waist Sizes:* 30" in 30"–44", 32" in 30"–44", 34" in 32"–44", 46" & 48" \$29.99 86-2011949



D. RedHead® Men's Cross Timber Cargo Pants

Classier than standard cargos, with the look and feel of slacks. 6 pockets. Chambray trim accents the waistband's interior. 100% cotton reverse twill. Machine wash. Imported. *Inseam/Waist Sizes:* 30" in 30"–48", 32" in 30"–48", 34" in 32"–44", 46" & 48" \$34.99 86-2198642 \$39.99







RedHead® Men's Flannel- or Fleece-Lined Jeans

Warm, comfortable lining fortifies these jeans against the cold. Choose from 100% cotton flannel or 100% polyester fleece; both trap heat well to keep you warm. Machine wash. Imported. Waist Sizes: 30"-46".

Flannel-Lined

Available in Darkstone.

\$39⁹⁹ 46" \$44.99
86-2124973

Fleece-Lined

Available in Phoenix.

\$39⁹⁹ 46" \$44.99
86-2125028

Inseam: Sizes Available

30"	31"-46"
32"	30"-46"
34"	31"-44"



Phoenix

Darkstone

Flannel-Lined Jeans

- Fortified with cotton flannel lining for added warmth
- 100% cotton denim exterior

Fleece-Lined Jeans

- Fortified with polyester fleece lining for added warmth
- 100% cotton denim exterior

★★★★★

A. Carhartt® Men's Insulated Duck Bib Overalls or Non-Insulated Sandstone Bib Overalls

Insulated Duck Bib Overalls: Made of 12 oz. 100% cotton ringspun duck with plied yarns for durability, plus a quilted, 100% nylon midweight lining for warmth
 • Water-repellent with a zip fly and zip-to-knee leg zippers for easy on/off
 • Triple-stitched main seams • 9 pockets • Hammer loop • High back with elastic suspenders • **Non-Insulated Sandstone Bib Overalls:** 12 oz. 100% cotton sandstone duck combined with the functional extras that help you work more effectively, like multiple tool and utility pockets and a hammer loop • Brush loop and reinforced pockets in the back • Both styles feature a chap-style double front with cleanout bottoms to hold kneepads • Machine wash • Made in USA
 • **Even Waist Sizes:** 32"-50" • Carhartt Style #: R02, R06

Inseam	Style	Sizes Available	Insulated	Non-Insulated (Not shown)
30"	Both	32"-50"	\$99	86-4795
32"	Both	32"-50"		
34"	Insulated	32"-50"	\$69.99	
34"	Non-insulated	32"-44"		86-824631



A
Carhartt
Brown



B

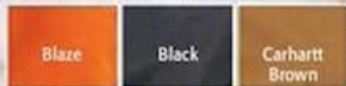
Carhartt
Brown

★★★★★

B. Carhartt® Men's Quilted Flannel-Lined Duck Active Jacket

This mainstay boasts a water-repellent 12 oz. 100% cotton ringspun duck exterior and 100% polyester quilted-flannel lining in the body, making it tough and warm enough for almost any job site. Triple-stitched main seams, 3-pc. hood, rib-knit waist and cuffs, 4 pockets. Machine wash. Made in USA. Sizes: S-2XL, 3XL-5XL, L/T-2XL/T. Carhartt Style #: J140. *Not all sizes are available in all colors; visit basspro.com for details and 5-star reviews.*

\$99.99 86-987952
 3XL-5XL & Tall \$109.99





Columbia

Starting at
\$34⁹⁹

**Columbia® Men's Steens Mountain™
Full-Zip Fleece 2.0**

Full-zip front with 2 zip hand pockets to safely store essentials. Stand-up collar. 100% polyester MTR™ filament fleece. Machine wash. Imported. Sizes: S-2XL, 3X-4X. See more colors at basspro.com
\$34.99 86-1902347
3X & 4X \$39.99

NEW Charcoal Heather/
Marine Blue

Columbia



Buffalo

Navy

NEW
Shark/Ash

Charcoal
Heather

NEW
Surplus Green

Black/
Grill

Black

36

1-800-227-7776 • BASSPRO.COM

IT'S THE EXPRESS LINE ONLINE



Masterpass™ is a fast, convenient and secure way to shop online. Create an account once and skip checkout forms forever. Masterpass stores all of your payment and shipping information so you don't have to enter it each time you shop. Sign up for free at [Masterpass.com](https://www.masterpass.com). Don't just buy it. Masterpass it.

{ ACCEPTED AT THOUSANDS OF ONLINE MERCHANTS INCLUDING }

1800FLOWERS.COM, BASS PRO SHOPS, BLUE NILE, FANDANGO, KMART, NEW BALANCE, NEWEGG, RAKUTEN.COM, SEARS, WAYFAIR

Masterpass and the circles design are trademarks of Mastercard International Incorporated.



PHOTO ADVERTISEMENT

37



MEN'S BASE

Choose your number to meet the conditions.



A-H. **NEW** Under Armour® Men's ColdGear® Base Series Crew or Leggings
 Warmth in any level of cold • Each layer is rated according to the level of warmth it provides—the higher the number, the greater the protection • ColdGear coating to absorb, retain, and recirculate heat
 • Armourblock anti-odor technology • Flatlock stitching and ergonomic seam placement for free, easy movement and no chafing • Crew tops feature raglan sleeves • Leggings feature working fly
 • 95% polyester/5% elastane • Color: Black • Machine wash • Imported • Sizes: S–3XL

NOTICE: Odor Control. Odor-eliminating and odor-controlling products help reduce odors. The use of such products does not guarantee 100% odor elimination.

<p>A–B. Under Armour® Base 1.0 For mild-weather layering. Description A. Crew 86-2284448 B. Leggings 86-2284465</p>	<p>C–D. Under Armour® Base 2.0 For cold-weather layering. Description C. Crew 86-2284472 D. Leggings 86-2284479</p>	<p>E–F. Under Armour® Base 3.0 For extremely cold conditions. Description E. Crew 86-2284496 F. Leggings 86-2284514</p>	<p>G–H. Under Armour® Base 4.0 For brutally cold conditions. Description G. Crew 86-2284538 H. Leggings 86-2284558</p>
	\$44⁹⁹	\$54⁹⁹	\$74⁹⁹
			\$84⁹⁹

Under Armour: the ultimate gift.

A. **NEW** Under Armour® Men's Antler Shirt

Uniquely UA, uniquely outdoors • UA antler logo • HeatGear cooling power • 57% polyester/38% cotton/5% elastane stretch fabric for fast-drying performance and easy-moving comfort • Machine wash • Imported • Sizes: S-3XL

\$29⁹⁹ 86-2283096

Black

White

Red



Carbon Heather



NEW

B. **NEW** Under Armour® Men's Camo Fill Shirt

Quietly bold • UA logo front and center with camo fill print • HeatGear cooling power • 57% polyester/38% cotton/5% elastane stretch fabric for fast-drying performance and easy-moving comfort • Machine wash • Imported • Sizes: S-3XL

\$29⁹⁹ 86-2283121

Black



Scree Brown

Artillery Green

Slate Blue



NEW

C. **NEW** Under Armour® Men's Armour® Fleece Hoodie

ColdGear® keeps you warm • Storm® water-resistant construction • UA logo • 100% polyester fabric for moisture-wicking, fast-drying performance • Loose fit • Machine wash • Imported • Sizes: S-3XL

\$59⁹⁹ 86-2283201

Black

Midnight

Peacock

Red



Steel





A
Green



Black

Burgundy

Navy

A. Bass Pro Shops Men's Angler Jacket ★★★★★

The fisherman's best choice for warmth and protection on the water. Get him one this Christmas and he'll thank you all year long! Features a quiet, water-resistant shell with quilted lining in the body and hood. 4 pockets, 3-pc. hood, inset storm cuffs, and heavy-duty stretch waistband. Shell: 100% polyester oxford. Body and hood lining: quilted 78% polyester/12% rayon/10% cotton. Sleeve lining: 100% nylon. Machine wash. Imported. Sizes: S-2XL, 3XL-5XL, L/T-2XL/T.

\$49⁹⁹ 86-2151602
3XL-5XL & Talls \$54.99

★★★★★

B. RedHead® Men's Angler Jacket

Cast in comfort wearing a tightly woven, extra-strong nylon shell that blocks wind and resists rain. Teflon® HT repels water and stains; thick polyfill insulation quilted to the lining helps keep you warm. Features double-fleece, sweatshirt-style hood with drawstring; knit cuffs, waistband, and collar; snap storm flap; non-corrosive YKK® zipper; side handwarmer pockets with snaps; and raglan sleeves for free, easy movement. Machine wash. Imported. Sizes: S-2XL, 3XL-5XL, L/T-2XL/T. *Over 125 five-star reviews at basspro.com*

\$34⁹⁹ 86-1490737
3XL-5XL & Talls \$39.99



B
Navy

Hunter

Black

Burgundy



C
Olive/
Black

Black/
Black

Castlerock/
Granite

Navy/Granite

C. RedHead® Men's Fleece Jacket

Ideal for 3-season wear and holiday-season gifting. 100% polyester fleece. 2 zip hand pockets, 1 zip chest pocket, 1 interior pocket. Full-zip front, drawcord hem. Machine wash. Imported. Sizes: S-2XL, 3XL.

\$29⁹⁹ 86-2118716
3XL \$34.99



D
Olive/Black

D. RedHead® Men's Bear Creek Softshell Jacket
Packed with tons of cool features at a great price!
Notable details include 4-way stretch, 100% polyester construction with a water-resistant finish, microfleece lining, 3 zip pockets, and colorblock sleeves. Machine wash. Imported.

Sizes: S-2XL
\$49⁹⁹ 86-1723580



E. RedHead® Men's Grizzly Fleece Jacket
When cold temperatures put you in the mood to hibernate, reach for the Grizzly. This thick, warm, lined jacket traps body heat with polar fleece on the outside and plaid sherpa fleece on the inside. Full-zip front, 2 handwarmer pockets. 100% polyester. Machine wash. Imported. Sizes: S-2XL, 3XL.

\$49⁹⁹ 86-1919939
3XL \$54.99





100MPH

"No matter what the conditions, you can be assured that the GORE-TEX lining will keep you bone dry."

Bass Pro Shops 100MPH GORE-TEX® Parka
- basspro.com review by Primeshooter

A
Nautical
Blue



B
Granite



★★★★★

A-B. Bass Pro Shops 100MPH GORE-TEX® Parka or Bibs
The clear-cut winner in the battle for 100% waterproof/breathable rain protection • Laminated 150X3000 polyester GORE-TEX Performance Shell fabric • Backed by a full GORE-TEX membrane • Parka: Lined, zip-off visor hood • Fleece-lined collar • Sealed zipper with internal storm flap • Dropdown hip cover • Articulated elbows • Weatherproof neoprene cuffs • 4 pockets • 2 D-rings • Bibs: Articulated knees • Reinforced leg zips • X-style adjustable suspenders • Machine wash • Imported • Sizes: S-XL, 2XL, 3XL, L/T-2XL/T • 150+ 5-star reviews and lots more details at basspro.com

A. Parka
\$249.99 86-2164792
2XL, 3XL & Talls \$269.99
B. Bibs
\$219.99 86-2164805
2XL, 3XL & Talls \$239.99

A & B Colors

Red	Black	Nautical Blue	Granite
-----	-------	---------------	---------



A-B
Red





C
Stealth



D
Navy



Pro-quality rain gear.

Fortified with GORE-TEX
for 100% waterproof protection.

C-D. Bass Pro Shops Pro Qualifier® GORE-TEX® Parka or Bibs Exclusive double-layer GORE-TEX Performance Shell forms a 100% waterproof/windproof/breathable barrier • Front 2-way zipper with storm flap • Parka: 3-way adjustable hood • Watertight cuffs • 7 pockets • 2 external spring-loaded D-rings • Drawstring waist and bottom hem • Bibs: Full-length, waterproof, 2-way leg zips • Reinforced articulated knees • Adjustable cuffs • 5 pockets • Elastic waist • Colors: Stealth, Navy • Machine wash • Imported • Sizes: M-XL, 2XL, 3XL • **Not all colors are available in all sizes; visit basspro.com for complete details**

C. Parka	D. Bibs
\$219.99 86-2164843	\$219.99 86-2164975
2XL, 3XL \$239.99	2XL \$239.99

1-800-227-7776 • BASSPRO.COM

43

Bass Pro Shops
Attn: Order Dept.
2500 E. Kearney
Springfield, MO 65898-0123



Order online at basspro.com
Call toll-free 24 hours 1-800-BASS PRO (1-800-227-7776) USA and Canada
International: 1-417-863-2499 • U.S. FAX: 1-800-566-4600 • INTERNATIONAL FAX: 1-417-873-5000
Please have Customer # and key code from the back of catalog, plus credit card # and expiration date when you call.

NAME: _____ ADDRESS: _____ PHONE: _____
KEY CODE: 16 086 Customer # _____ CITY: _____ STATE: _____ ZIP: _____

Backorders allowed? Yes No Are you 18 years or older? Yes No Send email specials to: _____

PRICE	ITEM	COLOR	SIZE	QTY	DESCRIPTION	PRICE EACH	TOTAL PRICE

Order online at basspro.com

Buy a Bass Pro Shops® Gift Card!

Purchase or redeem by phone, Internet, mail, or at any Bass Pro Shops retail store. Gift Cards are sold and shipped separately from merchandise. Specify SKU #96-890295 and indicate whole dollar amounts. Do you wish to receive a catalog with your Gift Card?
 Yes No

Also available as an emailed e-gift card at basspro.com/giftcard

SALES TAX: Bass Pro Shops® charges applicable sales tax on items purchased from any of our catalogs or online and shipped to the following states in the U.S.: AK, AL, AR, AZ, CA, CO, FL, GA, IA, IL, IN, KS, LA, MA, MD, MI, MO, MS, NC, NH, NJ, NV, NY, OH, OK, PA, SC, TN, TX, VA, and WA. The amount of tax charged is based on the applicable sales tax rate. Shipping charges are not subject to tax in IA, MA, and OK. Shipping charges are subject to tax in all other states listed above. For questions regarding tax exempt status, please call: 1-800-BASS PRO (1-800-227-7776).

Restrictions are subject to change without notice. For the latest restriction information, please visit basspro.com/restrictions or call 1-800-227-7776.

STATEMENT OF BUYER: By ordering products, I attest that I have checked all applicable federal, state, and local laws and restrictions before placing an order, have determined the legality of the items I am purchasing, and certify that I am an adult and under no legal prohibition. I also attest that I will not give or sell the product to anyone who is under any legal prohibition. I acknowledge that Bass Pro Shops® does not represent that I may legally purchase, possess, carry, or utilize blackpowder items, crossbows, air rifles, air pistols, bows, slingshots, pepper spray, batons, or any other items which I may order.

Return/Exchange Information: Items may be returned to any Bass Pro Shops® retail store or to our returns center. Visit basspro.com/help for more details. Ammunition, black powder, flares, food, and mouth calls may not be returned due to safety and/or sanitary reasons.

Prices: Generally, merchandise prices in our stores, catalogs, and websites will be the same for products purchased in and delivered to the contiguous 48 states. However, due to sales, retail store location, clearance events, or market conditions, prices may vary or change without notice. No mail orders, COD orders, or dealers, please. Bass Pro Shops® reserves the right to limit quantities. Please be aware that descriptive, typographic, or photographic errors may sometimes occur, and are subject to correction. Due to various state and local laws, not all items advertised for sale are available in all states.

Shipping: Some products are restricted by federal, state, and local laws and cannot be shipped to certain locations. Additionally, some products may not be able to be shipped to U.S. territories, international locations, or APO/FPO addresses. Heavy items may require an additional fee. For items delivered "curbside," the shipper is not responsible for placing item inside the delivery location. Some items ship directly from the manufacturer and require additional time for delivery. Heavy items, items delivered curbside, and items shipped directly from the manufacturer require a street address and may not be able to be expedited. Hazardous items ship ground only and may not be expedited.

Quantities: We reserve the right to limit quantities.

Errors: Descriptive, typographic, or photographic errors are subject to correction.

Privacy Policy: At times, we make our mailing list available to companies whose products may interest you. If you prefer not to be included, or if you wish to remove your name from our mailing list, call 1-800-BASS PRO; email privacy@basspro.com; or send a note to Bass Pro Shops Customer Service Privacy Director, 2500 E. Kearney, Springfield, MO 65898. For more information on our privacy policy, visit basspro.com

44 YOUR SIGNATURE REQUIRED. Signed X _____

PACKAGING & DELIVERY*

Total Price of Merchandise	Standard Delivery
\$0.01-\$25.00	\$5.95
\$25.01-\$50.00	\$8.95
\$50.01-\$75.00	\$10.95
\$75.01-\$100.00	\$12.95
\$100.01-\$150.00	\$14.95
\$150.01-\$200.00	\$16.95
\$200.01-\$300.00	\$18.95
Over \$300.00	\$19.95

*Subject to change without notice.

Total of All Merchandise Ordered	
Standard Packaging & Delivery (Required) (Normally shipped via USPS Allow 3-6 business days.)	
Shipping Surcharges (Street Address Required) Call for Express and International charges and to confirm specific delivery capabilities to your location: 1-800-227-7776	
Over-size Item Surcharge as indicated on item	
Subtotal	
Sales Tax (See Note At Left)	
Total Amount Enclosed or To Be Charged	

METHOD OF PAYMENT CHECK ALL THAT APPLY

Check/Money Order DISCOVER®
 MASTERCARD® VISA® Bass Pro Shops® Gift Card (see below)
 AMERICAN EXPRESS® Bass Pro Shops® MasterCard® Conservation Card

_____/_____/_____
Expiration Date

CARDHOLDER'S SIGNATURE _____
Bass Pro Shops® Gift Card For security purposes we will call you to obtain the 4-digit PIN on the back of the Gift Card.
DO NOT destroy Gift Card until all merchandise has been received. 19-Digit Gift Card # _____

Determining your correct size:
Our clothes are cut to traditional sizing. If between sizes, order the larger size.

Size	Chest	Waist	Neck	Sleeve
S	34"-36"	28"-30"	14"-14 1/2"	32"-33"
M	36"-40"	32"-34"	15"-15 1/2"	33"-34"
L	42"-44"	36"-38"	16"-16 1/2"	34"-35"
XL	46"-48"	40"-42"	17"-17 1/2"	35"-36"
2XL	50"-52"	44"-46"	18"-18 1/2"	36"-37"
3XL	54"-56"	48"-50"	19"-19 1/2"	37"-37 1/2"
4XL	58"-60"	52"-54"	20"-20 1/2"	37 1/2"-38"
5XL	62"-64"	56"-58"	21"-21 1/2"	38"-38 1/2"
6XL	66"-68"	60"-62"	22"-22 1/2"	38 1/2"-39"

LADIES' SIZES:

Size	Bust	Waist	Hips
XS (0-2)	31"-32"	23"-24"	35 1/2"-36 1/2"
S (4-6)	33"-34"	25"-26"	37 1/2"-38 1/2"
M (8-10)	35"-36"	27"-28"	39 1/2"-40 1/2"
L (12-14)	37 1/2"-38"	29 1/2"-31 1/2"	41"-42 1/2"
XL (16-18)	40 1/2"-42 1/2"	33 1/2"-35 1/2"	43"-45"
XXL (20)	44 1/2"	37 1/2"	45"

WOMEN'S PLUS SIZES:

1X (16W-18W)	44 1/2"-46 1/2"	36 1/2"-38 1/2"	48"-50"
2X (20W-22W)	48 1/2"-50 1/2"	40 1/2"-42 1/2"	52"-54"
3X (24W-26W)	52 1/2"-54 1/2"	44 1/2"-46 1/2"	56"-58"

Men's Regular Sizes: Height of 5'9"-5'11".
Men's Tall Sizes: Height of 6' and above. Sleeves and back are 1" longer; chest size remains the same as Regular sizing.
Neck: Measure around base of neck. Number of inches equals the neck size you should order.
Sleeves: Choose pants that fit you well and measure a pant leg from crotch seam to bottom.
Waist: With elbow bent, measure from back center of neck along backside of arm to wrist.
Chest: With arms relaxed down at sides, measure fullest part of chest, keeping tape parallel to the floor.
Waist: Keep a finger between tape and body, measure around body where pants waist normally rides. For comfort, measure over shirt (not over pants).
Hips: Measure around fullest part of seat while standing. Hold tape firmly, but not tightly.

SHOE SIZES:
(Male/Female Conversion)

Men's	Ladies'	Men's	Ladies'
8	10	10 1/2	12 1/2
8 1/2	10 1/2	11	13
9	11	11 1/2	13 1/2
9 1/2	11 1/2	12	14
10	12	12 1/2	14 1/2

Catalog expires January 31, 2017



Signature Restaurants

Your Dining Adventure Starts Here

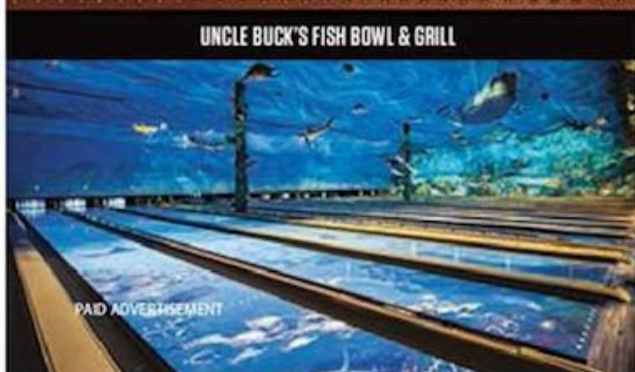
Gather the family and get ready for a dining experience like never before. From an underwater-themed dinner and bowling adventure to a riverfront restaurant at the peak of a pyramid, Bass Pro Shops features incredible restaurants across the U.S. Each destination artfully combines the beauty of the outdoors with mouth-watering food and unforgettable fun. You will enjoy flavors of the region with menus that highlight locally-sourced food.

BASSPRO.COM/RESTAURANTS

Locate a Bass Pro Shops restaurant near you to plan your next dining adventure today!



- UNCLE BUCK'S FISH BOWL & GRILL
- ISLAMORADA FISH COMPANY
- UNCLE BUCK'S GRILL
- BLUE FIN LOUNGE
- HEMINGWAY'S BLUE WATER CAFE
- WHITE RIVER FISH HOUSE
- UNCLE BUCK'S BREWERY & STEAKHOUSE
- THE LOOKOUT AT THE PYRAMID





Natural
REFLECTIONS

B
Brown



C
Camel



A. Natural Reflections® Ladies' Trapper Moc
Slip your feet into warm comfort. Soft and giving suede-leather uppers feature full faux-shearing linings for warmth around your feet. Cushioning memory-foam footbeds. Flexible, indoor/outdoor outsoles. Imported.

Ladies' Whole Sizes: 6-11.

Tan	86-2207923
Brown	86-2207898
Winter White	86-2207930
Gray	86-2207857
Black	86-2207870

\$29.99

B. Natural Reflections® Ladies' Willow Bend II
Surround your feet with soft warmth as the days turn colder. Sharp-looking, genuine suede uppers with a warm and soft faux-fur collar. Soft fleece linings in the vamp and footbed keep feet warm. Cushioned insoles and indoor/outdoor outsoles. Imported. Ladies' Whole Sizes: 6-11.

\$39.99 86-2203913

C. RedHead® Men's Lodge Moc
Settle into a pair of our plush mocs and discover just how comfortable our footwear can be. Equipped with genuine suede leather uppers with acrylic lining for both comfort and durability, plus rugged, non-skid outsoles to help ensure solid footing both indoors and out. Imported. Men's Whole Sizes: 7-14.

\$34.99 86-885887



A
Shiny TNF
Black

NEW

B
Dachshund
Brown/
Demitasse
Brown

NEW

C
Dark
Earth



NEVER STOP EXPLORING™

A. The North Face® Ladies' Nuptse® Purna Boots

Waterproof, BLC-compliant, velvet suede uppers, lightweight synthetic shell, and seam-sealed, waterproof construction. Eco-friendly 200 gram PrimaLoft® Silver Eco Insulation. Northotic® drop-in midsoles/footbeds and TNF Winter Grip® outsoles with Ice Pick® temperature-sensitive lugs. Imported. Ladies' Sizes: 6-10, 11.

\$129⁹⁹ 86-2113572

B. NEW The North Face® Ladies' Shellista II Mid Boots

Waterproof, BLC-compliant, nubuck leather upper with a soft, oversized knit collar and woman-specific, injection-molded TPR shell for great protection. H2O Proof waterproof construction and 200 gram PrimaLoft® Silver Eco Insulation keep feet warm and dry. TNF Winter Grip® outsoles with Ice Pick® temperature-sensitive lugs. Imported. Ladies' Sizes: 6-10, 11.

\$139⁹⁹ 86-2293951

C. NEW The North Face® Ladies' Shellista II Shorty Boots

Waterproof, BLC-compliant, suede leather and recycled PET ripstop uppers with a woman-specific, injection-molded TPR shell. H2O Proof waterproof construction and 200 gram PrimaLoft® Silver Eco Insulation, TNF Winter Grip® outsoles with Ice Pick® temperature-sensitive lugs. Imported. Ladies' Sizes: 6-10, 11.

\$119⁹⁹ 86-2293940

D. NEW Sorel® Ladies' Joan of Arctic Boots

Beautiful waterproof suede leather uppers with seam-sealed waterproof construction and handcrafted vulcanized rubber shells. Removable 6 mm inner boot made of recycled felt inside. Bonded felt frost plug midsoles. Durable, molded rubber outsoles with proven herringbone tread design. Comfort rated to -25°F. Imported. Ladies' Whole Sizes: 7-10.

Black 86-2294287 **\$179⁹⁹**
Quarry 86-2294263



D
Black



NEW

Quarry

1-800-227-7776 • BASSPRO.COM



NEW

A

Thinsulate Ultra
INSULATION
1,000 Gram

100%
WATERPROOF



B



Thinsulate Ultra
INSULATION
600 Gram

100%
WATERPROOF

Break-Up
COUNTRY

Side-zip



LACROSSE



NEW

C

Thinsulate Ultra
INSULATION
800 Gram

100%
WATERPROOF



A-B. RedHead® Men's 16" Guide Hunting Boots

- A. **NEW** 16": 1,000 gram 3M™ Thinsulate™ Ultra Insulation style in TrueTimber Kanati
- B. 16": 600 gram 3M™ Thinsulate™ Ultra Insulation side-zip style in Mossy Oak Break-Up Country

Vulcanized-rubber construction for 100% waterproof protection. Durable molded-rubber outsoles. Imported. Avg. Wt. Per Pair: A: 5 lbs.; B: 6 lbs. Men's Whole Sizes: 7-14.

A. \$129⁹⁹
86-2297949

B. \$139⁹⁹
86-2194592

C. **NEW** LaCrosse®

- Men's 18" Alphabury Pro Boots
- 100% waterproof
- 800 gram 3M™ Thinsulate™ Ultra Insulation
- Rubber-over-neoprene construction. Bury Pro outsoles. Imported. Men's Whole Sizes: 7-14.

\$159⁹⁹ 86-2296484



D



PRIMALOFT
INSULATION
800 Gram

100%
WATERPROOF

Break-Up
COUNTRY



E



NEW

100%
WATERPROOF

Break-Up
COUNTRY



F



NEW

PRIMALOFT
INSULATION
600 Gram

100%
WATERPROOF

Break-Up
COUNTRY

D. Irish Setter®

- Men's 17" Rutmaster® 2.0 Hunting Boots
- 800 gram Primaloft® Insulation
- 100% waterproof

Vulcanized-rubber uppers over lightweight 3.5 mm neoprene. Mud Claw RPM II composite outsoles. Imported. Men's Whole Sizes: 8-14. \$159⁹⁹ 86-2201610

E. **NEW** The Original Muck Boot Company®

- Men's 15" Woody Max Boots
- Outfitted for cold-weather hunting
- 100% waterproof
- 5 mm CR Flex-Foam bootie uppers with 2 mm thermal foam underlay. Aggressive MS-1 outsoles. Imported. Men's Whole Sizes: 8-14.

\$194⁹⁹ 86-2292408

F. **NEW** Under Armour™ Men's 16"

- Hawmadillo 600 Hunting Boots
- 600 gram Primaloft® Insulation
- 100% waterproof
- Fully clad waterproof rubber uppers with reinforced rubber overlays. Imported. Men's Whole Sizes: 7-14.

\$124⁹⁹ 86-2288532

G-H. **NEW** RedHead® Men's Fast Tracker Scentinel Hunting Boots

- G. 16": Non-Insulated Snake boot in Natural/TrueTimber HTC
- H. 8": 400 gram 3M™ Thinsulate™ Ultra Insulation style in Dark Brown/TrueTimber HTC

Low-profile Fast Tracker footwear platform delivers comfortable traction, support, and stability over rough terrain. **Waterproof**, premium, full-grain leather and 900D nylon uppers. **BONE-DRY** waterproof/breathable membrane technology and **SCENTINEL** antimicrobial scent-control technology. Imported. Avg. Wt. Per Pair: G: 3 lbs. 4 oz.; H: 2 lbs. 15 oz. Men's Medium Sizes: 8-12, 13. Men's Wide Sizes: 9-12, 13, 14.

G. Side-Zip Snake Boots

\$139⁹⁹ 86-2292488

H. 400 Gram

\$129⁹⁹ 86-2292468

NOTICE: Odor Control. Odor-eliminating and odor-controlling products help reduce odors. The use of such products does not guarantee 100% odor elimination.

I. **NEW** ROCKY® Men's 10"

Sport Utility Max Hunting Boots

- 1,000 gram 3M™ Thinsulate™ Ultra Insulation
 - Guaranteed ROCKY waterproof construction
- A Bass Pro Exclusive** Full-grain leather and nylon uppers with heel reinforcements. Sport Utility outsoles. Imported. Avg. Wt. Per Pair: 4 lbs. 8 oz. Men's Medium Sizes: 8-12, 13, 14. Men's Wide Sizes: 9-12, 13, 14.

\$139⁹⁹ 86-2297321

J. **NEW** Irish Setter® Men's 9" VapriTrek LS Hunting Boots

- 800 gram Primaloft® Insulation
 - UltraDry™ waterproof technology
- Abrasion-resistant honeycomb-ripstop fabric uppers with Amaltec™ protection. Lightweight RPM LS midsoles/outsoles. Imported. Avg. Wt. Per Pair: 3 lbs. Men's Medium Sizes: 8-12, 13, 14. Men's Wide Sizes: 9-12, 13, 14.

\$179⁹⁹ 86-2288636

K. **NEW** Danner® Men's 8" High Ground Hunting Boots

- 400 gram 3M™ Thinsulate™ Ultra Insulation
 - 100% waterproof/breathable GORE-TEX® lining
- Ultra-durable, oiled nubuck leather and 900D nylon uppers with abrasion-resistant leather. Lightweight, non-loading Danner Talon outsoles. Imported. Avg. Wt. Per Pair: 3 lbs. 2 oz. Men's Medium Sizes: 8-12, 13, 14. Men's Wide Sizes: 9-12, 13.

\$189⁹⁹ 86-2293645



REDHEAD SILENT-HIDE

8
BREAK-UP COUNTRY

A
NEW PATTERN for 2016



HERMO-LITE



C
NEW PATTERN for 2016



BIG OUTDOORSMAN SIZES AVAILABLE

KIDS TOO!

D
NEW PATTERN for 2016



E
NEW PATTERN for 2016



A. RedHead® Silent-Hide® Insulated Jacket
Designed to move with you in silence
100 gram ThermoLite® Insulation • Comfort-fit hood • Gusseted back • Interior storm flap • Adjustable cuffs • 60% cotton/40% polyester • Colors: Mossy Oak Break-Up Country, Realtree Xtra®, TrueTimber Kanati • Imported • Sizes: S-2XL, 3XL, L/T-3XL/T • Youth Sizes: S-XL
\$69.99 86-1993681
3XL & Talls \$74.99
Youth \$49.99 86-1993784

B. RedHead® Silent-Hide® Insulated Bibs
100 gram ThermoLite® Insulation • 2-way front zip • Elastic waist • Leg zips • 60% cotton/40% polyester • Colors: Mossy Oak Break-Up Country, Realtree Xtra®, TrueTimber Kanati • Machine wash • Imported • Sizes: S-2XL, 3XL, L/T-3XL/T, 4XL/T-6XL/T • Youth Sizes: 8-16
\$69.99 86-1993751
3XL, L/T-3XL/T \$74.99
4XL/T-6XL/T \$79.99
Youth \$59.99 86-1993836

C. RedHead® Silent-Hide® Insulated Coveralls
100 gram ThermoLite® Insulation • 2-way front zip • Elastic waist • Leg zips • Ankle kickplates • 60% cotton/40% polyester • Colors: Mossy Oak Break-Up Country, Realtree Xtra®, TrueTimber Kanati • Machine wash • Imported • Sizes: S-2XL, 3XL, L/T-3XL/T • Youth Sizes: S-XL
\$99.99 86-1993631
3XL & Talls \$104.99
Youth \$69.99 86-1993813

D-E. RedHead® Silent-Hide® Shirt or Pants
Shirt: Articulated arms • Hidden-button collar • Pants: Reinforced seat • Articulated knees • Comfort Gripper waistband • 60% cotton/40% polyester • Colors: TrueTimber Kanati, TrueTimber MC2, Realtree Xtra®, Mossy Oak Break-Up Country • Machine wash • Imported • Sizes: S-2XL, 3XL, L/T-3XL/T, 4XL/T-6XL/T • Youth Sizes: XS-XL
Your Choice
\$39.99 3XL, L/T-3XL/T \$44.99
4XL/T-6XL/T \$49.99

D. Shirt	E. Pants
86-2291747†	86-1961580†
Youth Shirt	Youth Pants
\$29.99	\$29.99
86-1962054†	86-1962100†

†Not all patterns available in all sizes.

MOUNTAIN STALKER

ELITE SERIES

BONE DRY

THERMOLITE

A. RedHead® Mountain Stalker Elite Series Parka
 BONE-DRY 100% waterproof shell and lining • 100% polyester • Shell: 5 pockets • Full-zip front • Storm flap • Duraflex® adjustable cuffs • Liner: 200 gram ThermoLite® Micro Insulation in sleeves, 150 gram in body • Zip, fleece-lined handwarmer pockets • Colors: Mossy Oak Break-Up Country, Realtree Xtra®, TrueTimber Kanati • Machine wash • Imported • Sizes: M-XL, 2XL-3XL

\$159⁹⁹ 86-2174574 2XL & 3XL \$169.99

B. RedHead® Mountain Stalker Trophy Jacket
 BONE-DRY 100% waterproof/windproof/breathable • 200 gram ThermoLite® Micro Insulation in sleeves, 150 gram in body • 100% polyester • Colors: Mossy Oak Break-Up Country, Realtree Xtra®, TrueTimber Kanati • Machine wash • Imported • Sizes: M-XL, 2XL-3XL

\$119⁹⁹ 86-2180105

2XL & 3XL \$129.99
 Youth \$79.99 86-2174680

C. RedHead® Mountain Stalker Elite Series Pants
 BONE-DRY 100% waterproof/windproof/breathable • 100% polyester • 150 gram ThermoLite® Micro Insulation • Colors: Mossy Oak Break-Up Country, Realtree Xtra®, TrueTimber Kanati • Machine wash • Imported • Sizes: M-XL, 2XL-3XL

\$89⁹⁹ 86-2180164

2XL & 3XL \$99.99

D. RedHead® Mountain Stalker Elite Series Bibs
 BONE-DRY 100% waterproof/windproof/breathable • 150 gram ThermoLite® Micro Insulation • 100% polyester • Harness system • Colors: Mossy Oak Break-Up Country, Realtree Xtra®, TrueTimber Kanati • Machine wash • Imported • Sizes: M-XL, 2XL-3XL

\$119⁹⁹ 86-2179729

2XL & 3XL \$129.99
 Youth \$79.99 86-2180178

E. RedHead® Mountain Stalker Elite Series Coveralls
 BONE-DRY 100% waterproof/windproof/breathable • 200 gram ThermoLite® Micro Insulation in the body and 150 gram in the sleeves • 100% polyester • Colors: Mossy Oak Break-Up Country, Realtree Xtra®, TrueTimber Kanati • Machine wash • Imported • Sizes: M-XL, 2XL-3XL

\$159⁹⁹ 86-2180153

2XL & 3XL \$169.99



Zip-out thermal liner



BONE DRY
GUARANTEED
WINDPROOF/WATERPROOF

THERMOLITE

RED HEAD BRAND
OUTDOORSMAN
SIZES AVAILABLE

NEW
PATTERN
2016



Zip-out thermal liner

A-C. RedHead C.W.S.* Parka with Liner, Bibs, or Pants BONE-DRY 100% waterproof/windproof/breathable membrane • 150 gram ThermoLite® Micro Insulation • Bibs: Adjustable stretch suspender system with dual clip release • 2 front waterproof zip chest pockets • 2 front slash pockets • Pants: 2 side waterproof zip cargo pockets • 2 front pockets • 16" waterproof ankle zips for easy on/off • Extra-wide belt loops • Dual front snaps with relief zipper • 2 waterproof zip cargo pockets • 20" waterproof lock-down slider leg zips for easy on/off • 100% polyester with ultra-quiet, warp-knit suede • Colors: Realtree Xtra®, Mossy Oak Break-Up Country, TrueTimber Kanati • Machine wash • Imported • Sizes: S-XL, 2XL-3XL, L/T-3XL/T

A. Parka
\$189⁹⁹ 86-2009099
2XL & 3XL \$199.99
Talls \$209.99

B. Bibs
\$149⁹⁹ 86-2009214
2XL & 3XL \$159.99
Talls \$169.99

C. Pants
\$89⁹⁹ 86-2009161
2XL & 3XL \$99.99
Talls \$109.99



SCENTINEL



TUNDRA FLEECE

D-E. NEW RedHead® SCENTINEL Tundra Fleece Jacket or Pants Made to outlast Mother Nature's worst, now with SCENTINEL Scent Control Technology to outsmart nature's best • 100% windproof/breathable • Jacket: Full-zip front • Zip chest pocket • Zip handwarmer pockets • Zip cuffs • Removable, 3-panel, adjustable hood • Harness slot • Pants: Removable suspender system • Raised back to block wind • Grip tape inside waist • Zip rear pocket • Handwarmer pockets • Zip inset cargo pockets • Knife/accessory clip pocket • Leg zips • 100% polyester heavyweight fleece with high-loft berber interior • Colors: Mossy Oak Break-Up Country, TrueTimber Kanati • Machine wash • Imported • Sizes: S-XL, 2XL-3XL

Your Choice
D. Jacket \$119⁹⁹ 86-2284083
E. Pants 2XL & 3XL \$129.99 86-2284127

TECH WINDPROOF

SCENTINEL

SCENTINEL Scent Control Technology
Traps odor and inhibits its growth for more field success.

F-H. **NEW** RedHead® Tech Windproof Jacket, Pants, or Vest
Built with a 3-layer, bonded, windproof, 100% polyester fleece that's highly breathable. Now with SCENTINEL Scent Control Technology • **Jacket:** Performance-paneled fit • Reverse-coil full-zip front • 2 zip hand pockets • Hidden spandex cuffs • Pass-through harness slot • **Pants:** Elastic waist panels • 2 front slash pockets • 2 large zip inset cargo pockets • 11-1/2" ankle zips with lock sliders • Rubber taping in waistband • **Vest:** Blocks the wind • Quiet and comfortable • Performance-paneled fit • Reverse-coil full-zip front • 2 large zip hand pockets • Pass-through harness slot • **Colors:** TrueTimber Kanati, Mossy Oak Break-Up Country, TrueTimber MC2 • Machine wash • Imported • **Sizes:** S-XL, 2XL-3XL

\$89⁹⁹ *Your Choice*

2XL & 3XL **\$99.99**

F. Jacket 86-2284135 G. Pants 86-2284142

H. Vest

\$69⁹⁹

86-2284162 2XL & 3XL **\$79.99**

EXPLORER FLEECE

I-K. **NEW** RedHead® Explorer Fleece Jacket, Vest, or Pants

Perfect for hunting in cooler climates or as an inner layer when the temperature drops • SCENTINEL Scent Control Technology • Midweight 100% polyester fleece • Performance fit • Stretch fleece to increase your mobility on the hunt • **Jacket:** 2 zip slash pockets • Zip chest pocket • Full-zip front • **Vest:** 2 zip slash pockets • Chest pocket • **Pants:** 2 fleece-lined handwarmer pockets • 2 side cargo pockets • 2 rear pockets with snaps • **Colors:** Mossy Oak Break-Up Country, TrueTimber Kanati • Machine wash • Imported • **Sizes:** S-2XL

I. Jacket **\$59⁹⁹**

86-2296222

J. Vest **\$49⁹⁹**

86-2296249

K. Pants **\$54⁹⁹**

86-2296264

DISCLAIMER: Odor-eliminating and odor-controlling products help reduce odors. The use of such products does not guarantee 100% odor elimination.





GO WHERE YOU DON'T BELONG.



NEW

A

NEW

B



NEW
COUNTRY



A-B. **NEW** Under Armour® Stealth Hoodie or Stealth Bibs
Silent performance • Storm® water resistance • UA Scent Control Technology • High-pile bonded sherpa fleece • Hoodie: Secure handwarmer pockets • Bibs: Handwarmer pockets • 2 secure cargo pockets • Leg zips • Colors: Mossy Oak Break-Up Country, Realtree Xtra® • Machine wash • Imported • Sizes: S-3XL

\$159⁹⁹ A. Hoodie 86-2285495
\$169⁹⁹ B. Bibs 86-2286193



NEW

C

Ridge Reaper
Barren

NEW
COUNTRY

NEW
REALTREE
XTRA

NEW
REALTREE
XTRA

C. **NEW** Under Armour® Icon Camo Hoodie
Amazing combination of warmth, comfort, and durability • Armour Fleece® • Storm® water resistance • Improved fit for all-day comfort • Hidden media pocket • Drawcord hood • 100% polyester • Machine wash • Imported • Sizes: S-3XL
\$74⁹⁹ 86-2285818



BROWNING

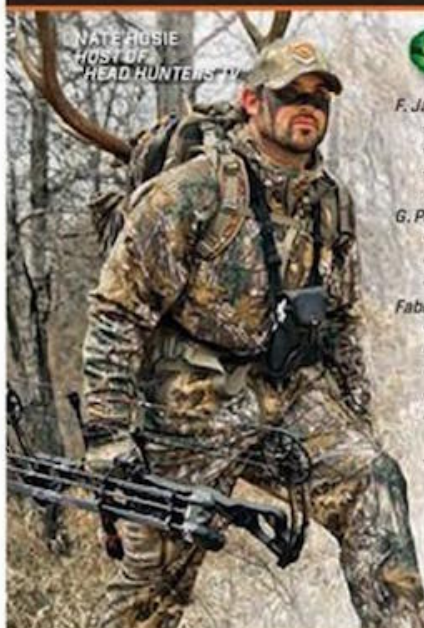
Sometimes, muscle weighs less.

D-E. Browning® Men's Hell's Canyon Ultra-Lite Jacket or Pants

A Bass Pro Exclusive Optimized for agility
• Water- and wind-resistant • **ADVANCED™** Scent Control • Breathable • Soft fleece lining
• Lightweight • Jacket: Harness-compatible
• Internal cuffs • **YKK®** full-zip front • 2 oversized zip chest pockets • Pants: Rubberized grip waist • 2 zip thigh pockets on each leg • 2 hip pockets with knife clips • 100% polyester
• Colors: Realtree Xtra®, TrueTimber Kanati
• Machine wash • Imported • Sizes: S-XL, 2XL-3XL

\$129⁹⁹ *Your Choice*

2XL & 3XL \$139.99
D. Jacket E. Pants
86-2085461 86-2085487



NATE FUSIE
HOST OF
"HEAD HUNTERS™"



FULL SEASON VELOCITY

SCENTLOK TECHNOLOGIES

F. Jacket

- Safety harness access opening
- 5-pocket design for essential gear storage
- Stretch-fit cuffs help lock in scent
- Textured-fleece collar reduces neck abrasion

G. Pants

- 8-pocket design with easy-access openings
- Gripper waist for secure fit
- Inner-thigh gusset for flexibility

Fabric

- Microtricot shell, microfleece liner
- Carbon Alloy odor adsorption
- Inner-thigh gusset for flexibility • DWR finish
- Wicking treatment for moisture management
- Colors: Mossy Oak Break-Up Country, Realtree Xtra® • Machine wash • Imported
- Sizes: S-XL, 2XL-3XL

\$149⁹⁹

2XL & 3XL \$159.99
F. Jacket 86-2208138
G. Pants 86-2208180

NOTICE: Odor Control. Odor-eliminating and odor-controlling products help reduce odors. The use of such products does not guarantee 100% odor elimination.





A
3-9x40



4-12x40

B
3-9x32
Rimfire
Matte Black

FURSUIT

A. Nikon® PROSTAFF® Rimfire II Riflescope

Big game optical performance for .17 and .22 rimfire rifles. Fully multicoated optical system delivers superior light transmission and image clarity. Windage and elevation adjust 1/4" at 50 yards, and easy-to-use Zero-Reset turrets bring you back to original zero after adjusting for long shots. The quick-focus eyepiece delivers generous eye relief for eyeglass wearers and brings the scope's 22 LR-specific ballistic-compensating BDC 150 reticle into sharp focus with a twist of the hand. Nitrogen-filled and O-ring-sealed. **Waterproof**, fogproof, and shock-proof. Color: Matte Black. Mfrs. lifetime warranty.

Power	Obj. Dia. (mm)	Reticle	Eye Relief	Lgth.	Wt. (oz.)	Price
3-9x	40	BDC 150	3.6"	12.4"	16.8	86-2201524 129.99
4-12x	40	BDC 150	3.6"	12.4"	16.8	86-2201525 149.99

B. Pursuit® Rimfire Scope

Premium rimfire scopes with fully coated lenses for hunting, plinking, or target shooting. The rugged 1-pc. tube is nitrogen-purged, **waterproof**, fogproof, and shock-proof. Includes matching mounting rings that fit standard rimfire tip-off rails, plus see-through lens caps. Precise 1/4 MOA windage and elevation click adjustments; parallax set at 30 yds. Flex reticle. Available in fixed 4x32 configuration or adjustable power 3-9x32. [See the full selection at basspro.com](http://www.basspro.com)

Power	Obj. Dia. (mm)	Reticle	Eye Relief	Lgth.	Wt. (oz.)	Price
4x32	32	Rimfire Duplex	3.5"	11.18"	12.35	86-1878359 49.99
3-9x32	32	Rimfire Duplex	3.5"	11.4"	14.75	86-1878362 59.99



C
10x42

MONARCH



PROSTAFF



NEW



C. Nikon® MONARCH® 3 ATB Binoculars

Fully multicoated Eco Glass™ lenses and a phase-correction high-reflective silver-alloy prism coating. Lightweight and rugged, yet sleek and comfortable ATB body. Multi-click turn-and-slide rubber eyecups. **Waterproof** and fogproof.

Pwr./Obj. Dia. (mm)	Color	Field of View @ 1,000 yds.	Close Focus Distance	Wt. (oz.)	Ht.	Price
8x42	Black	330'	9.8'	24.9	6.1"	86-1856424 239.99
10x42	Black	299'	9.8'	24.7	6"	86-1856425 249.99

D. NEW Nikon® PROSTAFF® 3S 10x42 Binoculars

Body constructed of fiberglass-reinforced polycarbonate resin that is amazingly light weight. Rubber armoring resists shock. Multilayer coatings and high-reflective, silver-alloy mirror coatings provide clear, crisp, high-resolution images.

Pwr./Obj. Dia. (mm)	Color	Field of View @ 1,000 yds.	Close Focus Distance	Wt. (oz.)	Ht.	Price
10x42	Black	367'	9.8'	20.3	5.9"	86-2291227 139.99



E
10x42



GREAT GIFT IDEA!

F
10x42

E. Leupold® BX-2 Acadia® Binoculars

Multicoat 4" lens system and phase-coated roof prisms. Diopter focus paddle. Armor-coated and **waterproof**. Slim and lightweight. Mfrs. limited lifetime warranty.

Pwr./Obj. Dia. (mm)	Color	Field of View @ 1,000 yds.	Close Focus Distance	Wt. (oz.)	Ht.	Price
8x42	Black	394'	7.5'	23.1	6"	86-2105887 229.99
10x42	Black	368'	9'	23.5	6"	86-2105888 249.99

F. Leupold® BX-1 McKenzie Binoculars

Phase-coated BaK-4 prisms and fully multicoated lenses for bright, vivid, and razor-sharp viewing. Rugged armor coating. Ergonomic design with large, tactile focus dial. Twist-up eyecups. **Waterproof/fogproof**.

Pwr./Obj. Dia. (mm)	Color	Field of View @ 1,000 yds.	Close Focus Distance	Wt. (oz.)	Ht.	Price
8x42	Black	330'	10'	22.1	5.8"	86-2105244 159.99
10x42	Black	305'	10'	22	5.8"	86-2105245 179.99



G. NEW OCULUS® Phase™ Binoculars

Loaded with premium optical features to ensure the brightest, most colorful, and clearest images possible, even in dim light. Top-grade ED-5 glass with multiple layers of SpectreX™, Phase Correction and dielectric prism coatings, ergonomic magnesium frame. **Waterproof** and fogproof. Color: Green.

\$499⁹⁹

86-2247298



Read more about these remarkable binoculars at basspro.com



NEW



G
10x42

H. OCULUS® Pro Team HD Binoculars

Phase-coated BaK-4 roof prisms and fully multicoated HD glass lenses work together to deliver a crisp, bright, razor-sharp view. Lightweight and durable polycarbonate frame features a tough rubber armor exterior. Fogproof and **waterproof**, even in extreme weather conditions. 3-position, twist-up eyecups. Right eye diopter/center focus wheel. Comes with lens caps and carry case. Color: Black.

Pwr./Obj. Dia. (mm)	Field of View @ 1,000 yds.	Close Focus Distance	Wt. (oz.)	Ht.	Price
8x32	288'	4.9'	19.75	4.9"	86-2220920 139.99
10x32	393'	4.9'	19.75	4.9"	86-2220921 149.99
10x42	341'	4'	26.1	5.5"	86-2108116 199.99

PRO TEAM

HD GLASS

LIGHTWEIGHT, AFFORDABLE, CLEAR & BRIGHT

Fully multicoated HD glass and dielectric prism coatings work together to deliver a crisp, bright, razor-sharp view.



H
10x42

FURSUIT X1



I
Gun Metal Gray

ZALLOY
METAL HOUSING

I. Pursuit X1 Laser 1000 Laser Rangefinder
An extremely accurate and versatile tool for long-range shooting and big game hunting. Smart-tech rangefinder with Angle Intelligence Technology provides true horizontal distance to target when shooting from elevated stands or in steep terrain. Shooting distance is displayed with an organic light-emitting diode (OLED). 8x magnification. Automatic scan mode. Maximum range of 1,000 yds. from reflective targets. 1 CR-2 lithium ion battery (included). Water-resistant. Includes case.

\$249⁹⁹ 86-2214021

FURSUIT

NEW



J. NEW Pursuit XR 600 Angle Laser Rangefinder
Ranges out to 600 yds. with ± 1 -yd. accuracy. TrueTimber Kanati camo with textured, ergonomic grip. Dual modes: standard mode gives single distance readings with 1 push of a button; scan mode quickly ranges multiple targets without having to reactivate laser for each target. AI™ (Angle Intelligence) Technology compensates for slope in both mode settings. LCD display. 6x magnification. Water-resistant. Includes 1 CR-2 lithium ion battery and nylon case.

\$139⁹⁹ 86-2292979

HALO



K. HALO® Angle ZIR10X Laser Rangefinder
Color LCD readout clearly displays reticle, battery status, and mode setting. Standard and scan modes of operation. Angle Intelligence Technology to compensate for shooting from elevated stands or in steep terrain. Displays distances out to 1,000 yds. with ± 1 -yd. accuracy. 6x magnification. Ergonomic Soft Touch grip extends over objective lens to minimize glare. Water-resistant, dual-density housing. Includes nylon strap, case, and 1 CR-2 lithium ion battery

\$179⁹⁹ 86-2292980



NEW



NEW

A. NEW Wildgame Innovations™ Cloak™ 8
LED infrared flash illuminates deer out to 50'.
8 MP color images by day and sharp black and white
images at night, plus 480p video. 1-sec. trigger.
Comes with 2 bungee cords for easy mounting.
\$69⁹⁹ 86-2306664

B. NEW Wildgame Innovations™ Cloak™ 8
LightsOut™ LightsOut 32 LED No Glo infrared flash
illuminates out to 45' without detection. 8 MP color
images by day and sharp black and white images at
night; 480p video. 1-sec. trigger.
\$89⁹⁹ 86-2306651



C. NEW SpyPoint Force B Game Camera
42-LED Low-Glow flash that reaches 100'.
5 detection zones out to 80'. Built-in 2" viewing
screen. 12 MP; HD video (720p) with sound. Modes
include time-lapse, multi-shot, and continuous.
\$149⁹⁹ 86-2301803



MOULTRIE

NEW



D. NEW Moultrie® M-888 Game Camera
36 LEDs and long-range infrared technology capture
images out to 100'. 14 MP still shots or 720p videos
with 4 resolution options. 0.7-sec. trigger. 3-shot
burst mode, time-lapse and hybrid modes.
\$149⁹⁹ 86-2303113



Bushnell
TROPHY
CAM



E. NEW Bushnell® Trophy Cam™ HD Essential
E2 Game Camera Field Scan 2X mode takes
time-lapse images, or activates by adjustable
PIR motion sensor with 0.3-sec. trigger. IR flash.
3 resolution settings (3, 8, 12 MP). Built-in black and
white LCD viewer. Multi-image mode.
\$149⁹⁹ 86-2297788



F. Cuddeback® E3 Black Flash*
21 LED, 2W IR Black Flash illuminates targets out to
50' without LED glow. Choose resolution settings
from 5–20 MP. Multiple recording options. Zone
Control and 0.25 sec. trigger.
\$149⁹⁹ 86-2099703



STEALTH CAM



G. NEW Stealth Cam® Z14FX Camera Combo
Includes batteries and SD card. Low-light image
sensor takes nighttime images with 14 IR emitters.
10 MP still shots, and 30 second video clips.
\$99⁹⁹ 86-2309415



H. NEW Stealth Cam Card Reader/Viewer
Shows still shots and video, and a headphone jack
provides audio playback. Accepts SD cards up to
64 GB. Runs on 4 AAA batteries (not included).
Mini USB connection.
\$69⁹⁹ 86-2305858



I-K. Maxflash® Memory Cards
A perfect memory card choice for high-
performance game cameras, digital cameras,
and more. Enjoy fast data transfer rates and
quality at a great value.

	Type	Capacity (GB)	Price
L. 86-2012792	SDHC	8	17.99
J. 86-2012793	SDHC	16	34.99
K. 86-2012794	SDHC	32	49.99



A. BlackOut® Hybrid 180

Full 180° front window with adjustable covers. Triangle window panels in rear. Shoot-through mesh window panels. Water-resistant 600D polyester shell. Imported. Weight: 22.95 lbs. Ceiling Height: 73". Hub-to-Hub: 83"x83".

\$199⁹⁹ 86-22156670

At 90° hub-to-hub, this blind will comfortably seat 3+ hunters.

B. BlackOut® X300 Hunting Blind

Over 300° of visibility! Camo shoot-through mesh window panels and BlackOut interior. 4 exterior brush straps. Rugged 600D fabric shell. Plenty of room for 3+ hunters. Imported. Weight: 31.5 lbs. Ceiling Height: 76". Hub-to-Hub: 90"x90".

\$279⁹⁹ 86-2313899+



C. RedHead 300 Series Armchair

Packed with extras your current hunting/camping chair can't match, like foam padding (on the hard armrests, seat, and back); a cupholder; and pivoting, wide-base feet that help prevent the chair from sinking into the ground. Strong steel frame with durable powder-coated finish. Seat is constructed with water-resistant 100% polyester fabric. Includes carry bag with shoulder strap. Imported. 20"x17"x19"/37". Weight: 14 lbs. Max. Weight Capacity: 300 lbs.

\$59⁹⁹ 86-1964029+



D. Black

Improved with 4 legs and feet for support.



E. Black

D-E. BlackOut® Swivel Tripod Chair or Swivel Hard-Armchair

These swiveling hunting chairs provide the finest blind seating available. Both feature a quiet, smooth, 360° swiveling action that allows you to turn and take angled shots with as little motion and noise as possible. Quick, easy setup; stable bases; independently adjustable legs for uneven terrain; wide pivoting feet; thick, padded seat with water-resistant neoprene fabric; collapsible for easy transport. Imported. Tripod: 22"x20-1/2"x36-1/2". Weight: 10.5 lbs. Armchair: 20"x15"x32". Weight: 14 lbs. Max. Weight Capacity: 300 lbs.

D. Swivel Tripod Chair

\$79⁹⁹ 86-1997630+

E. Swivel Hard-Armchair

\$99⁹⁹ 86-1997631+

NOTICE: Some items require an additional shipping charge due to size, weight, or quantity ordered. Ground delivery may not be available in some areas. Call for availability and for shipping rates outside U.S., and for Alaska, Hawaii, or Puerto Rico. +Additional \$8 shipping charge per item. 0Additional \$14 shipping charge per item.



IMPROVED FIRE RATING!



Our #1 selling safe!

A. RedHead™ 1856 Collection Ultra-Fire-Resistant Gun Safe
Honoring the lengthy RedHead tradition of quality and value since 1856, this ultra-fire-resistant gun safe provides 60 min. of fire protection at 1,400° F. Modular shelving allows secure storage of up to 23 long guns (depending on shelving layout) with several long guns and handguns inside the door where they're rapidly accessible for home defense. To protect against unwanted entry, the safe is constructed with heavy, 12-ga. steel, and has 2-way lock bolts 1" in diameter. Textured Charcoal finish with unique graphics. Weight: 490 lbs. 58"x30"x20".

\$899⁹⁹ 86-2186547*



D Silver

E Silver



F Black



G Black/Red



B. Homady® Rapid Safe 2700 XL

Multiple touch-free access options: RFID wristband, stickers, and key fob; plus backup key lock. Spring-assisted lid opens instantly. 14-ga. steel with 2 hardened locking lugs. AC power with battery backup (batteries not included). Complies with ASTM*, CA DOJ, and TSA safety standards. 12.7"x8.7"x2.9".

\$199⁹⁹ 86-2304381

C. NEW Browning® ProSteel PV500 and PV1000 Pistol Vault

Robust gun storage in a small package. Constructed with 10-ga. steel body, solid .5" steel locking bolts, and a recessed lid that resists pry attacks. Opens with 4-button touch pad, or manual key backup. Operates by 8 AA batteries (not included). Spring-loaded lid. For home, vehicle, or RV.

Description	Size	Price
86-2185975+	PV500 4.5"x14.5"x11"	229.99
86-2185974+*	PV1000 7.5"x14.5"x11"	249.99

*Not shown

D-E. RedHead® Aluminum Rifle or Pistol Case

Ultra-durable case is built around a strong hexagonal aluminum frame fortified with heavy-duty corner protectors. Tough aluminum outer skin adds to the case's strength. Packed with 1" flat foam plus cutaway interior foam padding to hold guns securely. Full-length hidden hinge for superior security. Heavy-duty keyed lockable latches. 2-Rifle Case rolls on wheels.

Model	Dimensions	Price
D. 86-2031239+	1 Rifle 53"x12"x5"	89.99
86-2031238+	2 Rifles 53"x15"x5"	109.99
E. 86-2031313	2 Pistols 13"x10"x5"	49.99
86-2031312	4 Pistols 18"x13"x5"	59.99

F. Plano AW Tactical Gun Case

Plano's strongest line of gun cases comes designed for the most extreme conditions. Ultra-thick walls, Dri-Loc weather-resistant seal, heavy-duty dual-stage lockable latches with a pressure-release valve. Protective, customizable pluck foam. 46"x5.5"x16".

\$99⁹⁹ 86-2032331+

G. RangeMaxx® Scoped Gun Case

RangeMaxx gun cases provide full protection for your valuable firearms. A tough denier polyester outer shell, thick foam padding, and a shock-absorbing PVC bottom keep firearms from being scratched and dinged while being transported over rough terrain where game lives. Exterior pockets provide space for gun accessories and keep ammo separate from firearm. Scoped case has 1 large zip pocket. Imported.

Size	Price
86-2104853+	53"x12"x3" 39.99
86-2104852+*	48"x12"x3" 39.99

*Not shown

Edge SB-1 R.A.K. Package
\$399⁹⁹



- 80% Let-Off
- Axle-to-Axle: 32"
- IBO Speed: 320 fps

Diamond Edge SB-1 R.A.K. Package

Enjoy more time shooting and less time tuning with Diamond's most user-friendly design ever. Combines BowTech Synchronized Binary Cam System with an E-Z Adjust pocket design for set-and-forget tunability. Delivering big power with a consistent accuracy other cam designs simply can't match, this advanced cam system fires arrows up to 320 fps. 80% Let-Off. Brace Height: 7". Weight: 3.5 lbs. R.A.K. Package Includes: 3-pin sight, Hostage™ XL arrowrest, quiver, 5" Octane™ stabilizer, peep, string loop, wrist sling.

NEW PSE Archery® Brute Force™ RTS Compound Bow Package

Combines proven X-Tech™ preloaded split limbs and MH Hybrid cams to launch arrows up to 324 fps. 80% Let-Off. Axle-to-Axle: 31.25". Brace Height: 7". Weight: 4.2 lbs. RTS package includes: 3-pin sight, Whisker Biscuit Arrow Rest®, 6-arrow quiver, 5.75" stabilizer, peep sight, nock loop, neoprene sling.

BlackOut® Intrigue Package

Highly adjustable and capable (up to 313 fps), this lightweight bow gives developing archers everything they need to make the shot this fall and for years to come. Compact 31" axle-to-axle measurement. Brace Height: 7". Weight: 3.3 lbs. Package Includes: 3-pin Apex sight, Hostage™ arrowrest, quiver, stabilizer, peep sight, D-loop, wrist sling.

NEW BlackOut® S3 Package

The latest result of our continued partnership with the bow experts at BowTech, this bow delivers superior arrow flight, unmatched downrange accuracy, and game-stopping power on every shot. Combines the proven BlackOut platform with BowTech's Synchronized Binary Cam System to fire arrows up to 338 fps. Rotating draw length modules for easy draw-length adjustment in 1/2" increments from 26.5"-30.5". 80% Let-Off. Axle-to-Axle: 32.5". Brace Height: 6.5". Weight: 3.8 lbs. Package Includes: 4-pin sight, Hostage Max™ arrowrest, 1-pc. 5-arrow quiver, 7" Hunter Max stabilizer, installed string suppressor, installed peep sight, sling.

Brute Force RTS Package
\$549⁹⁹



- 80% Let-Off
- Axle-to-Axle: 31.25"
- IBO Speed: 324 fps

Intrigue Package
\$349⁹⁹



- 80% Let-Off
- Axle-to-Axle: 31"
- IBO Speed: 313 fps

BlackOut S3 Package
\$599⁹⁹



- 80% Let-Off
- Axle-to-Axle: 32.5"
- IBO Speed: 338 fps

	Right-Hand	Left-Hand	Draw Lgth.	Draw Wt. (lbs.)	Price
Edge SB-1 Package	80% Let-Off Single Cam				
Color: Mossy Oak Break-Up Country	86-2294618	86-2294616	13"-31"	5-70	399.99
Color: Purple/Black (Not shown.)	86-2294619	86-2294617	13"-31"	5-70	399.99
Brute Force™ RTS Compound Bow Pkg.	80% Let-Off Hybrid Cam				
Color: Mossy Oak Break-Up Infinity	86-2273942	86-2273944	25"-31"	40-60	549.99
Color: Purple/Black (Not shown.)	86-2273941	86-2273943	25"-31"	47-70	549.99
Intrigue Package	80% Let-Off Single Cam				
Color: Realtree Xtra®/Carbon Fiber/Red	86-2177323	86-2177321	23"-30"	20-70	349.99
Color: Realtree Xtra®/Carbon Fiber/Purple	86-2177322	86-2177320	23"-30"	20-70	349.99
BlackOut® S3 Package	80% Let-Off Binary Cam				
Color: True Timber Kanati	86-2297708	86-2297709	26.5"-30.5"	50-60	599.99
Color: Black	86-2297710	86-2297711	26.5"-30.5"	60-70	599.99
Color: Black	86-2297713	86-2297714	26.5"-30.5"	50-60	599.99
Color: Black	86-2297715	86-2297716	26.5"-30.5"	60-70	599.99

NOTICE: Some items require an additional shipping charge due to size, weight, or quantity ordered. Ground delivery may not be available in some areas. Call for availability and for shipping rates outside U.S., and for AK, HI, or Puerto Rico. *Additional \$8 shipping charge per item. **Additional \$250 shipping charge per item. **NOTICE:** Products on these pages do not include accessories shown.

GARMIN

NEW STRIKER™ Series

Available with the clearest-scanning sonar on the water, STRIKER fishfinders let you drop GPS waypoints to mark hot spots and to guide you back to them next time out! They can also mark locations of docks and boat ramps. Sonar history rewind allows you to go back to mark waypoints. Share waypoints and routes with other STRIKER or echoMAP™ products. All DV units include CHIRP DownVu™ scanning sonar, and the SV includes CHIRP DownVu and CHIRP SideVu™ scanning sonar. Each unit includes tilt/swivel mount and transom and trolling-motor mounts.



STRIKER™ 7sv 7" display with CHIRP SideVu™/DownVu™

\$499.99 86-2257248



STRIKER™ 5dv 5" display with CHIRP DownVu™

\$299.99 86-2257219



LOWRANCE

Elite Ti

NEW Elite-7 Ti

- 7", wide-screen, touchscreen display
- Advanced NMEA 2000* networking compatibility, including SmartSteer™ control of MotorGuide® XIS (sold separately)

NEW

Description
Elite-7 Ti Med/High/StructureScan*

86-2258361

Price
799.99



NEW Elite-5 Ti

- 5", wide-screen, touchscreen display
- DownScan Imaging™ for vivid, clearer presentations
- TrackBack™ scrollable history to revisit the hot spots

NEW

Description
Elite-5 Ti Med/High/StructureScan*

86-2258390

Price
599.99



NEW HELIX 9 SI GPS

480V x 800H
9" display

HUMMINBIRD

NEW



Description
HELIX 9 SI GPS

Sonar Frequency
50/83/200/455/800

86-2255866

Price
999.99



Safely jump-start a dead battery in seconds™. **NOCO®**

A-B. NOCO® BOOST+ UltraSafe® Lithium Jump Starter

GB70 ultra-powerful lithiumion battery jump-starts car, truck, boat, and other engines as big as 8L or even a 6 L diesel. GB40 safely jumps up to 6 L (3L diesel) engines, or charges phones, tablets, GPS, cameras, and more. Smaller yet stronger than lead-acid starters. GB20 can jump-start a wide range of engines from ATVs to full-size cars. Precision clamps ensure easy connection to smaller batteries.

	Model	Peak Amps	Price
A.	86-2288013 NEW GB70	2000	199.99
B.	86-2217938 GB40	1000	129.99
	86-2217937* GB20	400	99.99

*Not shown



C. Sunforce® 2.5-Watt Solar Battery Maintainer

Uses solar power to maintain 12V automobile and ATV batteries. Amorphous solar panel works in all daylight conditions, even on cloudy days. Durable ABS plastic; weatherproof and virtually maintenance-free. Plug into lighter slot, connect with alligator clips, or mount to windshield with suction cups.

\$14.99 86-2142263



D. NEW Weego® Tour 5200 Rechargeable Battery Pack

Charges phones up to 3 times and smaller tablets up to 1 time. Extra-quick charging—fast as your original charger. Simple to use—just connect and press the On button. Compact design with soft-touch finish. Independent lab-tested. Built-in circuitry protections to ensure your safety. Mfrs. 18-month limited warranty.

\$39.99 86-2334203



E. **NEW** Toumament Saver Pro Elite Push-Button Trolling Motor Battery Jumper System Innovative fallback system for dead starting battery. Starts engine in 10 sec. or less with a push of a button, drawing starting power from trolling battery. Safe for batteries and boat. Can be wired to your dash.

\$119.99 86-2308249



F. Bass Pro Shops All Purpose 12V Power Pack 12V power anywhere. Great for boats, kayaks, canoes, vehicles, camping, and emergency power supply. Includes 3 customizable quick-disconnect connector plugs, wall charger, and 12V charger.

\$119.99 86-2270500



G. **NEW** ProMariner® ProSport 15 Triple Bank On-Board Marine Battery Charger The industry's most advanced charging. 5-stage charging. Distributed-On-Demand Technology—only charges when necessary. Array of built-in protections. Pre-wired for easy installation.

\$129.97 86-2327504



A. NEW Save Phace® Marvel® Super Hero Sport Utility Mask Combo Pack
 Superpowered protection from piercing rain, extreme cold—even from bugs hitting your face (a big problem for ATV or boat owners). These lightweight, super hero-inspired sport utility masks won't fog up and only take 2 sec. to put on.

\$74.99 Spider-Man® 86-2329761 Iron Man 86-2329763 **\$113 Value**



© 2016 MARVEL.
 All rights reserved.



Marvel Combo Pack includes carrying case and interchangeable light lens.
 More Save Phace sport utility masks available on BassPro.com

	Description	Price
86-2309407**	NEW Fallen	72.99
86-2309408**	NEW Troubled Water	72.99
86-1237772*	Hed Hunter	72.99
86-1237766*	Total Eclipse	59.99
86-1237768*	Storm Troopa	59.99
86-1237770*	Black Mamba	72.99

*Not Shown *Allow 1-2 weeks for delivery.



B. Bass Pro Shops Marine Handheld Rechargeable LED Spotlight
 310-lumen bulb reaches 340+ yds. Ergonomic grip handle. Trigger activation. Fully waterproof. Floats. Lock/unlock switch. 3 light modes: High, Low, and SOS. **\$49.99** 86-2174067

C. Bass Pro Shops Marine Handheld Spotlight
 Up to 260 lumens of illumination. Fully waterproof. Floats. 3 light modes: High, Low, and SOS. Ergonomic grip handle. Lock/unlock switch. Cord slot on handle. Nylon cord to hang/attach light. Runs on 3 AA batteries (included). **\$24.99** 86-2174068

D. NEW Bass Pro Shops 200 Lumen Halogen Spotlight
 Powerful, durable handheld illumination. 200 lumens. Premium quartz halogen bulb. Beam viewable up to 3,000'. IP65-rated: Dustproof and highly water-resistant. Rechargeable model allows portable lighting convenience. 12V DC plug-in model with built-in 8' coiled cord offers unlimited lighting power.

	Description	Price
86-2336459	Rechargeable Spotlight - 200 Lumen	39.99
86-2336460	12V DC Spotlight - 200 Lumen	19.99



MERCURY VERADO

E. Bass Pro Shops Mercury® Outboard Motor Cover
 An outer shell of rugged, abrasion-resistant polyester defends against inclement weather. Water-repellent coating. Solution-dyed yarns are UV-resistant to prevent fading. Soft inner lining cushions engine cowling. A strap-in hem with quick-release buckle ensures a tight fit. Imported.

Description	Size	Price
Mercury® FourStroke	40 HP-60 HP	39.99
Mercury® FourStroke	75 HP-125 HP	39.99
Mercury® OptiMax® Pro	115 HP-175 HP	39.99
Mercury® 150 FourStroke	150 HP	49.99
Mercury® OptiMax®	200 HP-225 HP	49.99
Mercury® Verado® 4 Cylinder	135 HP-200 HP	49.99
Mercury® Verado® 6 Cylinder	200 HP-300 HP	49.99

86-2223113



F. NEW Bass Pro Shops LED Contour Flex Light
 Self-adhesive, flexible design for easy installation and endless mounting options. 3 rows of LEDs deliver superior illumination compared to ordinary LED strips. Durable 3M® adhesive. 12V. Water-resistant. Same light strip can operate in white or blue. 14". **\$24.99** 86-2270487

THE PERFECT FIRST, & FOREVER, BOAT



PRO 170

The TRACKER® Pro 170 is a value-packed boat that's loaded with angler-friendly features—and new for 2017, it's finished in our exclusive Black Cherry or Light Charcoal Diamond Coat™ for incredible durability and long-lasting beauty.

The Pro 170 is a great first boat—or forever boat—for you and your family, and it's got everything you need to go from the dealer to the water, including a Mercury® outboard, Lowrance® fishfinder, Minn Kota® trolling motor and custom-matched trailer with GALVASHIELD® Impact corrosion and chip protection.

IT'S MORE THAN A BOAT. IT'S A TRACKER.

\$13,495

w/Mercury® 40 ELPT FourStroke
& Custom Trailer
Plus freight & prep



**BACKED BY THE BEST
FACTORY WARRANTY
IN ALUMINUM BOATS**

855.580.0755

TRACKERBOATS.COM

TRACKER
boats

Real advertisement. Photos may show optional or special edition equipment available at an additional cost. Color, trim, finish, configuration and details may vary by state and are in addition to prices shown. Price is not suggested and approved by the manufacturer. Details in pricing, settings, features and specifications may vary by location and are subject to change without notice. Boat where prohibited by law. Boat offers are valid in states where advertised. Payment subject to credit review. See your local dealer for complete information. Prices shown do not include dealer freight and prep charges unless otherwise noted. © 2017, Springfield, MA, USA. Prices shown are based on United States currency. © 2017 by the River Marine Group, LLC. TRACKER

65



EXTREME QUALIFIER

Bass Pro Shops® Extreme® Qualifier Tackle Bags
 Heavy-duty, water-repellent denier polyester • Reinforced vinyl bottom
 • Integrated ID holder • Elastic tool holders keep pliers, hook removers, and other tools readily accessible • Large shoulder strap can be deployed under heavy loads • Imported

A. Bass Pro Shops® Extreme® Qualifier 370

★★★★★

Holds up to five 370 utility boxes • 24"x15"x11-1/2"

	Description	Color	Reg.	Sale
86-1550467	Bag Only	Red/Gray	38.99	30.97
86-1834644	Bag Only	Junglewood	44.99	35.97
86-1554029	Bag w/Four 370's	Red/Gray	54.99	43.97
86-1837788	Bag w/Four 370's	Junglewood	59.99	47.97

B. Bass Pro Shops® Extreme® Qualifier 360

★★★★★

Holds up to five 360 utility boxes • 19"x12"x9"

	Description	Color	Reg.	Sale
86-1550466	Bag Only	Blue/Gray	31.99	24.97
86-1554028	Bag w/Five 360's	Blue/Gray	46.99	36.97



C-F. Bass Pro Shops® Rod Racks

Store your rods out of harm's way and display them with pride, in a rack that's perfect for your living space. Our **Rod Link Modular Wall Rack** holds up to 8 combos; when you run out of room, just buy another to expand your capacity. Easy to install—aligns perfectly to wall studs spaced 16" apart. Made of solid hardwoods with an oak finish. 31-1/2"x16"x2-3/4". Our solid pine **Ceiling Rack** features protective rod inserts to hold up to 11 rod/reel combos. Oak finish, mounting screws included. 23"x3"x5/8". Or, take your choice of a classic 2-pc. **Horizontal** or **Vertical Wall Rack** that can hold up to 6 combos each. Oak finish, hardware included. 23-1/2"x3".

	Description	Reg.	Sale
C. 86-1811464	Rod Link Modular Wall Rack	19.99	14.97
D. 86-2054101	Ceiling Rack	19.99	14.97
E. 86-1811458	Horizontal Wall Rack	19.99	14.97
F. 86-1811457	Vertical Wall Rack	19.99	14.97



G. Bass Pro Shops Deluxe Fillet Kit

Work confidently with this premium 3-knife set. Each GripMaster™ knife features an ergonomic rubber grip, through-handle construction, and a razor-sharp 420 stainless steel blade. Kit includes 4", 6", and 9" knives, steel mesh fillet glove, odor bar for hand-washing, 2-stage sharpener, and roll-up case.

\$24.99 86-2225791 **Exceptional deal! A \$32 value.**



H. Bass Pro Shops® Folding Fillet Table

You'll appreciate the extra-large, 45"x23-1/2" heavy-duty polyethylene processing surface. Stands a comfortable 37-1/4" off the ground—no backaches! Weight is only 18 lbs., making it easy to transport. Folding legs are powder-coated for durability. Folded down, the table measures just 45"Lx23-1/2"Wx2"H. Also features an integrated ruler and sloped drainage system.

\$49.97 86-2180587+
 Reg. 69.99

NOTICE: Rods, reels, and accessories shown are not included.



Rapala

A. Up to 13 colors



Ghost Shad

Halloween

Silver

A. Rapala® Shadow Rap Shad

This broad-sided jerkbait excels wherever shad are on the menu, presenting an agonizingly slow rise on the pause and quick turns with minimal rod movement. Both varieties feature textured scale bodies, brilliant X-Rap®-style finishes, and VMC® thin-wire black nickel hooks. [Visit basspro.com](http://basspro.com) to view all colors.

Model Lgth. Wt. (oz.) Hk. Size Dives # Of Colors Price

A. Shadow Rap Shad

86-2279194 SDRS09 3-1/2" 3/8 6 4' 15 9.29

Shadow Rap Shad Deep

86-2279208* SDRSD09 3-1/2" 3/8 6 6' 14 9.29

*Not Shown



C. Up to 18 colors

C. River2Sea Larry Dahlberg Series Whopper Plopper*

On a slow crawl, all you hear are the tiny glass beads inside. Speed it up, and it whops water with abandon. Great for covering large areas and flats. Perfectly tuned flexible tail creates a range of commotion and sound.

	Length	Wt. (oz.)	Hook Size	# Of Colors	Price
86-2186421	3-1/2"	1/2	4	18	12.99
	5"	1-3/8	2/0	9	16.99

"Tied them on right out of the box and they fished great!"

Strike King® KVD 13-Piece Square Bill Kit
- basspro.com review from KY

★★★★★

E. Strike King® KVD 13-Piece Square Bill Kit

A Bass Pro Exclusive. Includes a Black Back Chartreuse 1.5, just like the one KVD used to win the 2011 Bassmaster Classic! Five 1.5 Silent Cranks, three 1.5 Rattling Cranks, three 2.5 Silent Cranks, and one 2.5 Rattling Crank, all in a 360 box.

\$54⁹⁷ 86-1790792 Reg. 64.99 **SAVE \$10** An \$82 value!

NOTICE: Some items require an additional shipping charge due to size, weight, or quantity ordered. Ground delivery may not be available in some areas. Call for availability and for shipping rates outside U.S., and for AK, HI, or Puerto Rico. *Additional \$8 shipping charge per item.

"...a significant increase in bites!"

Bass Pro Shops® Stik-O Worm® Pro Pack
- basspro.com review by BigRiverBass



B Watermelon/Chartreuse Tail

B. 6 colors



Baby Bass/Pearl

Black/Blue Flake

Green Pumpkin

Junebug

Watermelon/Red Flake

B. Bass Pro Shops® Stik-O Worm® Pro Pack ★★★★★

Our incredibly popular do-it-all worm casts like a rock and is known to wreak havoc on suspended and bedding bass. Easy to rig—impossible to fish wrong! Loaded with salt and infused with 8up™ scent. 50 pk.

\$14⁹⁷ 86-2168318 Reg. 17.99

D. 3 colors



Natural/Blue Pumpkinseed

Natural/Olive Bluegill

D Fluorescent Pumpkinseed

D. LIVETARGET® Sunfish Hollow Body

Like a frantic juvenile pushed to the surface by a hungry predator, the Sunfish stops, starts, and makes confused, unpredictable movements that trigger massive strikes. Weedless soft-body design is ideal for those sloppy, gnarly places that are difficult to fish with other topwater lures. Work it fast to set up a bubble trail, or try a slow, rhythmic dog walk.

	Length	Wt. (oz.)	Hook Size	# Of Colors	
86-2246463	3"	7/16	3/0	3	\$12 ⁹⁹
	3-1/2"	5/8	4/0	3	



Includes 12 lures!



Johnny Morris
SIGNATURE SERIES

TESTED TOUGH
ON BIG FISH!

A
JMX10HD

DBS
DUAL
BRAKING
SYSTEM



6-pin centrifugal brake controls the beginning of the cast, then the magnetic brake finishes your cast perfectly!

TITANIUM
DEPOSITION FINISH



The spool shaft rides on 2 premium, double-shielded ball bearings specifically treated to resist corrosion even in rugged saltwater conditions.

11 Bearing System

★★★★★

A. Johnny Morris® Signature Series Baitcast Reel

Put the power of carbon into your hands! Our top-of-the-line baitcaster is bulletproof inside and out, with its die-cast aluminum frame and sideplates, carbon-titanium deposition finish, double-anodized-aluminum spool and Japanese stainless steel ball bearings. The awesome feature set includes a double-shielded 10-bearing system with Powerlock™ instant anti-reverse; hardened Duralumin drive gear; our popular Dual Braking System™; smooth carbon drag; carbon-fiber Recurve handle, and more.

4 models available online for you to browse at basspro.com

\$159⁹⁹ 86-1756299

Bass Pro Breakthrough Value

B
JMT10HA

DBS
DUAL
BRAKING
SYSTEM

8 Bearing System

Johnny Morris TITANIUM 8™

B. Johnny Morris® Titanium 8 Baitcast Reel

A gem-quality reel with a full list of top-drawer features. Lightweight aluminum frame and sideplates, bulletproof titanium deposition finish, double-anodized aluminum spool, Duralumin drive gear and crank shaft; premium 8-bearing system with double-shielded Japanese stainless steel ball bearings includes Powerlock™ instant anti-reverse. External Dual Braking System™, carbon drag with up to 19.4 lbs. of max. drag power, 85 mm aluminum Recurve handle.

See all models and speeds available online at basspro.com

\$139⁹⁹ 86-2261175

Bass Pro Breakthrough Value

Johnny Morris

SIGNATURE SERIES

C. Johnny Morris®

Signature Series Spinning Reel
Our premier spinning reel combines a skeletonized rotor and frame for smooth, resistance-free performance. Exclusive Mag Spool Technology™ delivers longer casts, better line lay, smoother drag, and far less line twist. The ultra-smooth 11-bearing system includes our Powerlock™ instant anti-reverse for rock-solid hooksets. Shielded stainless steel ball bearings; sealed carbon-fiber drag; aluminum spool; machine-d aluminum handle. Includes a **FREE** spare, braid-ready aluminum spool (JMS50: standard spare spool). See all 7 models of the Johnny Morris Signature Series spinning reel online at basspro.com

\$99⁹⁹ 86-2118005

Bass Pro Breakthrough Value



Johnny Morris

CARBONLITE

D. Johnny Morris®

CarbonLite™ Spinning Reel
Loaded with carbon enhancements in all the right places, to give you an extremely light, beautifully balanced, but exceptionally strong reel. The entire frame and rotor are carbon; the stainless steel ball wire is capped by a titanium nitride-coated line roller for fluid, twist-free retrieves. Inside, a hard brass pinion gear is driven with the aid of a smooth 8-bearing system that includes Powerlock™ instant anti-reverse. The bearings are stainless steel, and the entire system is sealed to keep out contaminants. TPE and aluminum washers on the drag stack eliminate chatter on heavy loads. The solid aluminum handle features a comfortable, non-slip, paddle-style EVA knob. See all models online at basspro.com

\$79⁹⁹ 86-2231649

Bass Pro Breakthrough Value

Now in 7 high-performance models, including 2 with 6.1:1 high-speed retrieve.



Mag Spool Technology

FREE Spare Braid Spool



Made for braid, with shallow walls, a wide base, and rubberized braid ring. Included with all models except JMS50, which has a spare standard spool.

11 Bearing System



C
JMS40

LONG-CASTING SPOOL

Reduces line resistance on the spool's lip for increased casting distance.



8 Bearing System



D
JCS20



A
BNP10SHF

B
TS15MB

C
RVO3 SX

D
CU200IHG



A. Bass Pro Shops® Bionic Plus™ Baitcast Reel

Our easy-handling, palmable reel covers the bases with its aluminum frame and spool, graphite sidecovers, and quality 6-bearing system that includes Powerlock™ instant anti-reverse. Externally adjustable Dual Braking System™; Recurve handle. *See more at basspro.com*

\$79⁹⁹ 86-2222948



★★★★★

B. Lew's® Tournament MB Speed Spool® Baitcast Reel

Run-and-gun casters will love this reel's smaller, lighter profile. Built on an LFS 1-pc. die-cast aluminum frame with removable graphite palming sideplate, it features Lew's MSB Multi-Setting Brake with external magnetic and internal centrifugal cast control—just what a tourney angler needs. Also: high-strength brass gears; 9 double-shielded stainless steel ball bearings plus Zero-Reverse; carbon-composite metal drag system; bowed aluminum handle. *Get the full story online at basspro.com*

\$139⁹⁹ 86-2257692



★★★★★

C. Abu Garcia® Revo® SX Baitcast Reel

Inside the corrosion-resistant X2-Craftic™ aluminum alloy frame, you'll find 9 ball bearings plus 1 roller bearing, plus Abu Garcia's advanced D2 Gear Design™ for ultra-smooth casting and cranking. Carbon Matrix™ drag system provides smooth, consistent drag pressure across the entire drag range. C6 carbon handle sideplate; MagTrax™ brake system; Infini II™ spool design; compact bent handle and drag star; titanium-coated line guide. *Visit basspro.com to see all models and check out some of those 900+ five-star customer reviews!*

\$159⁹⁹ 86-1940380



D. Shimano® Curado® I Series Baitcast Reel

Designed to deliver maximum casting distance, braking performance, and durability. X-Ship provides increased gear durability, improved performance with lighter lures, and longer casts. An externally adjustable SVS Infinity Braking System gives you the ability to precisely adjust your cast, even with lighter lures, and Shimano's Stable Spool Design virtually eliminates spool vibration and improves consistency of rotation and smoothness exponentially. Other advantages include 5 ball bearings and 1 Super Stopper II anti-reverse roller bearing; Power AL aluminum frame; Super Free (SF) spool; SR-Concept; and Cross Carbon Drag. Fresh- and saltwater approved. *Get more info online at basspro.com*

\$179⁹⁹ 86-2085258

A performance reel.
What a great gift idea!

Abu Garcia
FOR LIFE™

E. Abu Garcia® Revo® SX Spinning Reel

The SX's C6 carbon body and X-Craft™ aluminum gearbox support a computer-optimized AMGearing™ system with machined-aluminum gears. Advanced features: lightweight graphite rotor; Everlast™ bail; Rocket line management™ system; braid-ready machined-aluminum spool; Rocket spool lip design™; Slow Oscillation system; 8 stainless steel HPCR® bearings plus 1 roller bearing for the K-Clutch™ anti-reverse; smooth, reliable Carbon Matrix™ hybrid drag. *Get more info at basspro.com*

\$159⁹⁹ 86-2244570

PFLUEGER
THE SMART CHOICE™

★★★★★

F. Pflueger Supreme® Spinning Reels

Expect legendary performance. Equipped with 8 stainless steel ball bearings plus an instant anti-reverse bearing. A magnesium body, rotor, and sideplate make this reel ultra-lightweight, and it's approved for use in saltwater. A carbon-inlay drag design uses an oil-felt/stainless steel system for continuous and consistent stopping power. Its braid-ready aluminum spool is machined, ported, and double-anodized for durability. Other features include a solid aluminum bail wire and machined-aluminum handle with Soft Touch knob. Sure-Click Bail® provides an audible signal when the bail is fully opened and ready to cast, while the anti-twist titanium line roller improves line lay. *Go to basspro.com for more details on all sizes of this versatile reel.*

\$99⁹⁹ 86-2157362

QUANTUM

G. Quantum® Throttle Spinning Reel

Tough and durable, yet smooth and responsive. Precision-machined R.E.D.™ (Reel Engine Design) aluminum uni-body with lightweight graphite rotor, smoke anodized-aluminum bail wire, and 10 stainless steel bearings plus 1 Continuous Anti-Reverse™. Also: braid-ready MaxCast™ II spool; rugged, stainless steel main shaft; powerful multi-disk drag. *Get more info at basspro.com*

\$59⁹⁹ 86-2245337



E
REVO2SX10

F
SUPSP25X

G
TH20



Johnny Morris SIGNATURE SERIES



★★★★★

Johnny Morris® Signature Series Rod
Carbon Coil Technology™ uses a double-helix configuration of materials to give these rods uncanny strength. For professional-grade performance, we combine this technology with RT5 Graphite to achieve the ultimate weight reduction while enhancing sensitivity. Premium Fuji KR Concept guides are combined with a skeletonized reel seat to further increase sensitivity and improve casting distance. Ergonomic cork grips ensure comfort through long days of fishing, and our easy-to-use line ID system helps you keep track of the line weight in use on each rod-and-reel setup.

\$149⁹⁹ Bass Pro Breakthrough Value

Casting 86-2151064 Spinning 86-2151076

Johnny Morris CARBONLITE



Johnny Morris® CarbonLite™ Casting, Spinning, Micro Guide Casting, or Slim Grip Rod
Lighter and stronger than ever, with highly sensitive, tournament-grade RT4 Graphite blanks. Our innovative line ID system helps you keep track of your line weight in use on each setup. Original Casting and Spinning models have durable, super-lightweight Pac Bay titanium frame guides. Micro Guide Casting models have Pac Bay micro guides that focus the flow of your line, eliminate slap, and increase vibration transmission. Slim Grip rods feature thinner handles that are great for smaller hands. P-Tec polyfoam split grips ensure comfort in all conditions; minimalist reel seat with Soft Touch coating.

\$99⁹⁹ - \$129⁹⁹ Bass Pro Breakthrough Value

Original Casting 86-2139093 Micro Guide Casting 86-2139256 Slim Grip Casting 86-2167384 Original Spinning 86-2139194 Slim Grip Spinning 86-2167389



NOTICE: All 1-pc. rods or rod sections 6 ft. or over in length require an additional \$8 shipping charge.

Johnny Morris® Titanium 8 Casting Rod
Our first to feature Winn® grips for ultimate comfort, slip resistance, and stress relief to hands and body, which minimize fatigue. These rods are constructed with highly sensitive RT4 Graphite blanks and Carbon Coil Technology™ for maximum structural reinforcement. A built-in line ID system gives instant reference. Each rod features precision Fuji 'O' Concept guides with "Deep-Pressed" frames that hang tough when others fail; and a 2-pc. minimalist reel seat with Soft Touch coatings.

\$129⁹⁹ Bass Pro Breakthrough Value

86-2270967

The fish are waiting...

MICRO LITE



Wonderfully light and sensitive, our popular Micro Lite rods are ideal for finesse fishing!

Bass Pro Shops® Micro Lite™ Graphite Rod

Tie your line to a Micro Lite rod for light line and lure applications. Built on our precision RT2 Graphite blanks, a unique fiber-layering pattern designed to reduce weight and enhance sensitivity. Stainless steel guides keep weight down for a more balanced feel. Graphite reel seats with cushioned stainless steel hoods keep reel tightly in place. Lightweight cork and composite-cork grips provide a secure hold, even with wet, cold hands. Great rods for panfish, trout, and bass fishing with finesse techniques. 3- and 4-pc. rods come with protective rod sock and carry case.

\$59.99

Spinning 86-2208773	Spin/Fly 86-2208935	Float 'N' Fly 86-2209102	Pack 86-2209155	Casting 86-2209151
------------------------	------------------------	-----------------------------	--------------------	-----------------------



Bass Pro Shops® Tourney Special® Premium Graphite Rod
Crafted with premium RT2 Graphite blanks for a rod that's remarkably powerful yet incredibly responsive. Unique fiber-layering pattern reduces weight while improving sensitivity. Lightweight 304 stainless steel guides with stainless steel inserts provide unhindered line flow in either direction. Exclusive low-profile, exposed-blank reel seats put your hand in direct contact with rod vibrations. EVA handle offers a secure grip in wet conditions. Multipurpose hook keeper accommodates any bait style.

\$49.99

Casting 86-2241080	Spinning 86-2241215
-----------------------	------------------------





Bass Pro Shops® Stampede™ Spincast Combo

A budget-friendly, well-designed spincast system with extra horsepower. Our Stampede Reel is strong and reliable, thanks to its tough graphite frame, double-paddle aluminum handle, extra-smooth 4-bearing system, pro-style star drag, and ergonomic thumb bar. We've matched this reel to an equally tough Stampede rod with a powerful fiberglass blank, graphite reel seat, stainless steel guides with stainless steel inserts for maximum strength, and comfortable EVA foam grips.

\$24⁹⁹ 86-2225981



QUANTUM



Quantum® Bill Dance Select Spinning Combo

A Bass Pro Exclusive Bill's favorite spinning setup—light, smooth, and strong. Whatever you fish for, you'll appreciate the performance. Reel: All-new platform • Forged-aluminum spool • Selectable Continuous Anti-Reverse™ • Quality 4-bearing system (3+1) • Smooth front drag • Left- and right-retrieve • Rod: Sensitive graphite composite blank • Stainless steel D-ring guides • Soft EVA handles

• See all models at basspro.com

\$39⁹⁹ 86-2161288



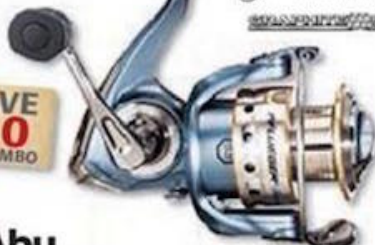
Bill Dance

Host of "Bill Dance Fishing" on YouTube®
3-Time Bassmaster® Angler of the Year
8-Time Bassmaster Classic® Qualifier



PFLUEGER

THE GREAT GREAT™



SAVE
\$20
ON COMBO

Pflueger® President®/Bass Pro Shops® Graphite Series™ Spinning Combo

Reel: Lightweight graphite body • Stainless steel main shaft • 9 stainless steel ball bearings • Instant anti-reverse • Smooth multi-disc drag • Sure-Click Bail® with audible signal • Rod: RT1 Graphite blank • Stainless steel guides with aluminum oxide inserts • Full cork grips • Graphite reel seat • Go to basspro.com to see more details on all available combos.

\$69⁹⁸ - \$79⁹⁸ Combo Price 86-2253985

\$89.98-99.98 if Purchased Separately—SAVE \$20

Abu Garcia

FOR LIFE™



Abu Garcia® Revo® S/XPS® Bionic Blade™ Baitcast Combo

Reel: X2-Craftic™ alloy frame • D2 Gear Design™ • 7 stainless steel ball bearings + 1 roller bearing • Pitch Centrifugal Brake System • Carbon Matrix™ drag • Rod: RT3 Graphite blank • Integrated Powerwall construction • Pac Bay Hialoy guides • Full-contact reel seat with Soft Touch finish • See basspro.com for more details!

\$179⁹⁸ Combo Price 86-2260098

\$209.98 if Purchased Separately—SAVE \$30

SAVE
\$30
ON COMBO

NOTICE: All 1-pc. rods or rod sections 6 ft. or longer require an additional \$8 shipping charge.

Classic Christmas

THE MAGIC RETURNS NOVEMBER 12 AT 5PM!



FREE
Photo with Santa!
November 12–December 24



Magical Wonderland Setting!

Our fantasy village has 3,500 square feet of wonderment with elves, arcades, moving trains, reindeer—even the big man himself.

Games & Activities!

This is no ordinary trip to the mall. With shooting arcades, moving trains, and remote-controlled cars, you'll have visions of candy canes and sugar plums dancing through your head.

FREE Photo with Santa!

Kids can get a photo taken on their favorite lap of all—for **FREE!** That's right, a **FREE** 4x6 photo. Visit a store for all the magic, beginning November 12 at 5pm.



3 WAYS TO SHOP!

basspro.com

Visit our stores.

1-800-BASS PRO

(1-800-227-7776)

Printed in the USA.

Catalog expires January 31, 2017.



Bass Pro Shops® National Headquarters
2500 E. Kearney
Springfield, MO 65898-0123

Postmaster: Please
Deliver Between
October 11-13

PRSR STD
U.S. Postage Paid
Bass Pro Shops

CURRENT RESIDENT OR

CUSTOMER #

KEY CODE

Become part of our fishing family!

NEW

White



YOUR
CHOICE
\$39⁹⁹

NEW

Grey



NEW Bass Pro Shops Men's Fishing Jersey

What do you get the angler who has everything? A lightweight fishing jersey loaded with logos from our fishing/boating family! Includes 1 logo each from Bass Pro Shops, TRACKER®, and NITRO. Ideal for fishing, boating, and on-the-water wear. 1/4-zip placket. UPF 30 sun protection. Moisture-wicking 100% polyester with antimicrobial properties. Machine wash. Imported. Sizes: S-3XL.

\$39⁹⁹

86-2249318

NITRO
PERFORMANCE FISHING BOATS

TRACKER
boats



Scan this code with your
smartphone to start shopping
our website right now!